

## Product datasheet for **TA309511**

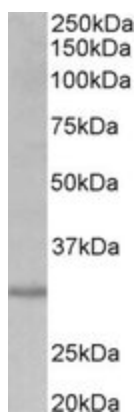
### CRLS1 Goat Polyclonal Antibody

#### Product data:

Product Type:	Primary Antibodies
Applications:	WB
Recommended Dilution:	WB: 0.2-0.6ug/ml
Reactivity:	Human (Expected from sequence similarity: Mouse, Rat, Dog, Pig, Cow)
Host:	Goat
Clonality:	Polyclonal
Immunogen:	Peptide with sequence C-RSALGSALDPLADK, from the internal region of the protein sequence according to NP_061968.1; NP_001120930.1.
Formulation:	Purified from goat serum by ammonium sulphate precipitation followed by antigen affinity chromatography using the immunizing peptide.
Purification:	Supplied at 0.5 mg/ml in Tris saline, 0.02% sodium azide, pH7.3 with 0.5% bovine serum albumin. Aliquot and store at -20°C. Minimize freezing and thawing.
Conjugation:	Unconjugated
Storage:	Store at -20°C as received.
Stability:	Stable for 12 months from date of receipt.
Gene Name:	cardiolipin synthase 1
Database Link:	<a href="#">NP_061968</a> <a href="#">Entrez Gene 66586 MouseEntrez Gene 366196 RatEntrez Gene 607530 DogEntrez Gene 54675 Human Q9UJA2</a>
Synonyms:	C20orf155; CLS; CLS1; dj967N21.6; GCD10
Protein Families:	Transmembrane
Protein Pathways:	Glycerophospholipid metabolism, Metabolic pathways



[View online »](#)

**Product images:**

TA309511 (0.2ug/ml) staining of HEK293 lysate (35ug protein in RIPA buffer). Primary incubation was 1 hour. Detected by chemiluminescence.