

## Product datasheet for **TA309506**

### SIM1 Goat Polyclonal Antibody

#### Product data:

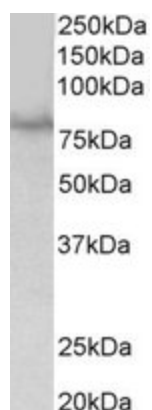
Product Type:	Primary Antibodies
Applications:	WB
Recommended Dilution:	WB: 1-3ug/ml
Reactivity:	Human (Expected from sequence similarity: Mouse, Rat, Dog, Cow, Pig)
Host:	Goat
Clonality:	Polyclonal
Immunogen:	Peptide with sequence C-SGDRYRTEQYQS, from the internal region of the protein sequence according to NP_005059.2.
Formulation:	Supplied at 0.5 mg/ml in Tris saline, 0.02% sodium azide, pH7.3 with 0.5% bovine serum albumin.
Purification:	Purified from goat serum by ammonium sulphate precipitation followed by antigen affinity chromatography using the immunizing peptide.
Conjugation:	Unconjugated
Storage:	Store at -20°C as received.
Stability:	Stable for 12 months from date of receipt.
Gene Name:	single-minded family bHLH transcription factor 1
Database Link:	<a href="#">NP_005059</a> <a href="#">Entrez Gene 20464 MouseEntrez Gene 309888 RatEntrez Gene 481937 DogEntrez Gene 6492 Human P81133</a>
Background:	SIM1 and SIM2 genes are Drosophila single-minded (sim) gene homologs. SIM1 transcript was detected only in fetal kidney out of various adult and fetal tissues tested. Since the sim gene plays an important role in Drosophila development and has peak levels of expression during the period of neurogenesis, it was proposed that the human SIM gene is a candidate for involvement in certain dysmorphic features (particularly the facial and skull characteristics), abnormalities of brain development, and/or mental retardation of Down syndrome. [provided by RefSeq]
Synonyms:	bHLHe14



[View online »](#)

Protein Families: Druggable Genome, Transcription Factors

**Product images:**



TA309506 (1ug/ml) staining of HEK293 lysate (35ug protein in RIPA buffer). Primary incubation was 1 hour. Detected by chemiluminescence.