

Product datasheet for **TA309498**

Ubiquitin (UBB) Rabbit Polyclonal Antibody

Product data:

Product Type:	Primary Antibodies
Applications:	IF, IHC, WB
Recommended Dilution:	WB, IP
Reactivity:	Human, Monkey, Mouse, Rat, Rabbit, Bovine, Porcine, Dog, Sheep, Chicken, Xenopus, Drosophila, Hamster, Guinea Pig
Host:	Rabbit
Clonality:	Polyclonal
Immunogen:	Native bovine Ubiquitin, conjugated to KLH
Formulation:	PBS pH7.4, 50% glycerol
Concentration:	lot specific
Conjugation:	Unconjugated
Storage:	Store at -20°C as received.
Stability:	Stable for 12 months from date of receipt.
Gene Name:	ubiquitin B
Database Link:	NP_061828 Entrez Gene 22187 Mouse Entrez Gene 192255 Rat Entrez Gene 479513 Dog Entrez Gene 696110 Monkey Entrez Gene 7314 Human P0CG47
Background:	<p>This gene encodes ubiquitin, one of the most conserved proteins known. Ubiquitin is required for ATP-dependent, nonlysosomal intracellular protein degradation of abnormal proteins and normal proteins with a rapid turnover. Ubiquitin is covalently bound to proteins to be degraded, and presumably labels these proteins for degradation. Ubiquitin also binds to histone H2A in actively transcribed regions but does not cause histone H2A degradation, suggesting that ubiquitin is also involved in regulation of gene expression. This gene consists of three direct repeats of the ubiquitin coding sequence with no spacer sequence. Consequently, the protein is expressed as a polyubiquitin precursor with a final amino acid after the last repeat. Aberrant form of this protein has been noticed in patients with Alzheimer's and Down syndrome. [provided by RefSeq]</p>
Synonyms:	HEL-S-50

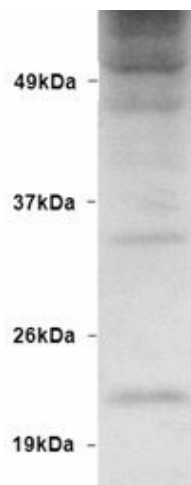


[View online »](#)

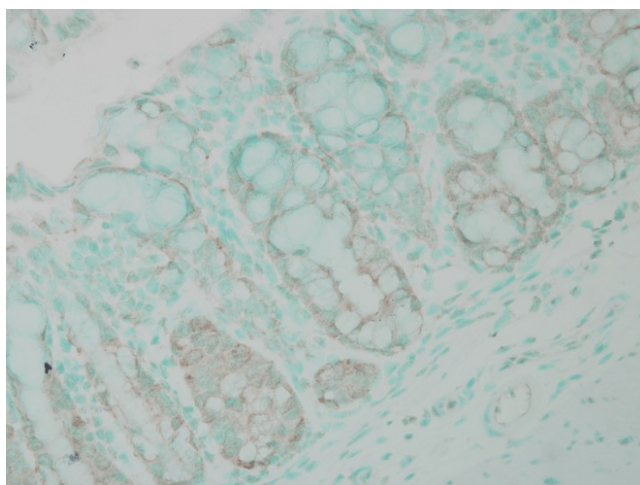
Protein Families: Druggable Genome

Protein Pathways: Parkinson's disease

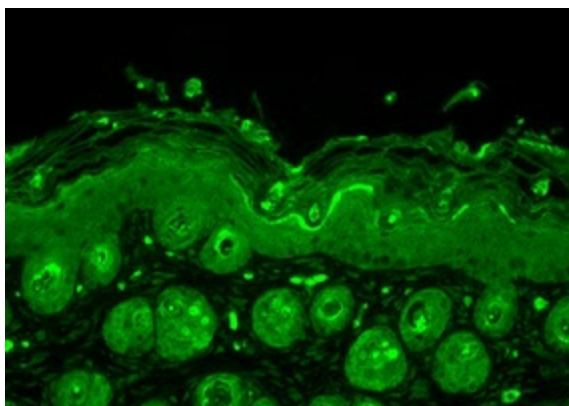
Product images:



Western blot analysis of ubiquitinated proteins in HEK93 cells, using a dilution of anti-UBB.



Immunohistochemistry analysis using Rabbit Anti-Ubiquitin Polyclonal Antibody, Tissue: colon carcinoma. Species: Human. Fixation: Formalin. Primary Antibody: Rabbit Anti-Ubiquitin Polyclonal Antibody at 1:100000 for 12 hours at 4°C. Secondary Antibody: Biotin Goat Anti-Rabbit at 1:2000 for 1 hour at RT. Counterstain: Methyl Green at 200uL for 2 min at RT.



Ubiquitin visualized using anti-UBB, tested on Bouin's fixed paraffin-embedded backskin sections of transgenic mice.