

## Product datasheet for **TA309486**

### TLR4 Rabbit Polyclonal Antibody

#### Product data:

Product Type:	Primary Antibodies
Applications:	IHC, WB
Recommended Dilution:	FC, IHC, ICC, WB
Reactivity:	Human, Mouse
Host:	Rabbit
Clonality:	Polyclonal
Immunogen:	Developed against a synthetic peptide corresponding to amino acids 420-435 of human TLR4.
Formulation:	PBS pH7.4, 50% glycerol
Conjugation:	Unconjugated
Storage:	Store at -20°C as received.
Stability:	Stable for 12 months from date of receipt.
Gene Name:	toll like receptor 4
Database Link:	<a href="#">NP_003257</a> <a href="#">Entrez Gene 21898 Mouse</a> <a href="#">Entrez Gene 7099 Human</a> <a href="#">O00206</a>

**Background:** The protein encoded by this gene is a member of the Toll-like receptor (TLR) family which plays a fundamental role in pathogen recognition and activation of innate immunity. TLRs are highly conserved from Drosophila to humans and share structural and functional similarities. They recognize pathogen-associated molecular patterns (PAMPs) that are expressed on infectious agents, and mediate the production of cytokines necessary for the development of effective immunity. The various TLRs exhibit different patterns of expression. This receptor is most abundantly expressed in placenta, and in myelomonocytic subpopulation of the leukocytes. It has been implicated in signal transduction events induced by lipopolysaccharide (LPS) found in most gram-negative bacteria. Mutations in this gene have been associated with differences in LPS responsiveness. Also, several transcript variants of this gene have been found, but the protein coding potential of most of them is uncertain. [provided by RefSeq]

**Synonyms:** ARMD10; CD284; TLR-4; TOLL

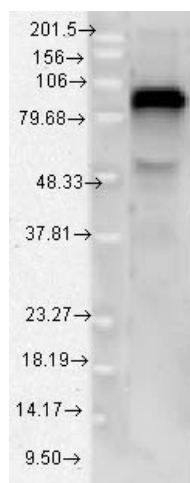
**Protein Families:** Druggable Genome, Transmembrane



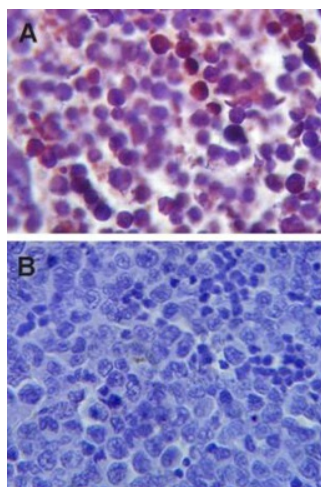
[View online »](#)

Protein Pathways: Pathogenic Escherichia coli infection, Toll-like receptor signaling pathway

**Product images:**



Western blot analysis of TLR4 using a 1:1000 dilution of TA309486.



IHC analysis of TLR4 using TA309486, tested in formalin-fixed paraffin-embedded mouse spleen tissue.