

Product datasheet for **TA309483**

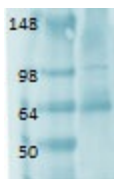
Sodium Iodide Symporter (SLC5A5) Mouse Monoclonal Antibody [Clone ID: FP5]

Product data:

Product Type:	Primary Antibodies
Clone Name:	FP5
Applications:	WB
Recommended Dilution:	WB, IHC, IF, ELISA
Reactivity:	Human, Mouse, Rat
Host:	Mouse
Isotype:	IgG1, kappa
Clonality:	Monoclonal
Immunogen:	Mannose binding protein hNIS fusion (AA468-643)
Formulation:	PBS, 50% glycerol, 0.09% sodium azide
Conjugation:	Unconjugated
Storage:	Store at -20°C as received.
Stability:	Stable for 12 months from date of receipt.
Gene Name:	solute carrier family 5 member 5
Database Link:	NP_000444 Entrez Gene 114479 MouseEntrez Gene 114613 RatEntrez Gene 6528 Human Q92911
Background:	This gene encodes a member of the sodium glucose cotransporter family. The encoded protein is responsible for the uptake of iodine in tissues such as the thyroid and lactating breast tissue. The iodine taken up by the thyroid is incorporated into the metabolic regulators triiodothyronine (T3) and tetraiodothyronine (T4). Mutations in this gene are associated with thyroid dysgenesis 1.
Synonyms:	NIS; TDH1
Protein Families:	Druggable Genome, Transmembrane



[View online »](#)

Product images:

Western blot analysis of Sodium Iodide Symporter, Clone FP5, tested on human retina lysate, using a 1:1000 dilution of TA309483