

## Product datasheet for **TA309477**

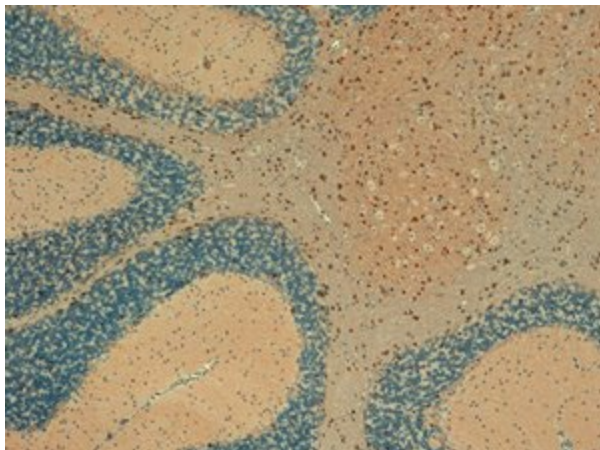
### KCNMA1 Mouse Monoclonal Antibody [Clone ID: S6-60]

#### Product data:

Product Type:	Primary Antibodies
Clone Name:	S6-60
Applications:	IHC
Recommended Dilution:	WB, IHC, IP
Reactivity:	Mouse, Human, Rat, Zebrafish
Host:	Mouse
Isotype:	IgG2a
Clonality:	Monoclonal
Immunogen:	Fusion protein amino acids 690-1196 (cytoplasmic C-terminus) of mouse Slo1
Formulation:	PBS pH7.4, 50% glycerol, 0.09% sodium azide
Conjugation:	Unconjugated
Storage:	Store at -20°C as received.
Stability:	Stable for 12 months from date of receipt.
Gene Name:	potassium calcium-activated channel subfamily M alpha 1
Database Link:	<a href="#">NP_001014797</a> <a href="#">Entrez Gene 16531 Mouse</a> <a href="#">Entrez Gene 83731 Rat</a> <a href="#">Entrez Gene 3778 Human</a> <a href="#">Q12791</a>
Synonyms:	bA205K10.1; BKTM; hSlo; KCa1.1; MaxiK; mSLO1; SAKCA; SLO; SLO-ALPHA; SLO1
Note:	Detects ~110-130kDa. Epitope mapped within amino acids 690-715.
Protein Families:	Druggable Genome, Ion Channels: Potassium, Transmembrane
Protein Pathways:	Vascular smooth muscle contraction



[View online »](#)

**Product images:**

IHC analysis of Slo using anti-slo1, tested on mouse cerebellum tissues.? Nuclear staining of oligodendrocytes and microglial cells of the white matter. Neurons are negative.