

Product datasheet for **TA309469**

Rhodopsin (RHO) Mouse Monoclonal Antibody [Clone ID: 4D2]

Product data:

Product Type:	Primary Antibodies
Clone Name:	4D2
Applications:	IF
Recommended Dilution:	ICC, IHC, IP, WB, ELISA
Reactivity:	Human, Mouse, Rat, Bovine, Porcine
Host:	Mouse
Isotype:	IgG1
Clonality:	Monoclonal
Immunogen:	Bovine Rhodopsin
Formulation:	TBS, 50% glycerol, 0.09% sodium azide
Concentration:	lot specific
Conjugation:	Unconjugated
Storage:	Store at -20°C as received.
Stability:	Stable for 12 months from date of receipt.
Gene Name:	rhodopsin
Database Link:	NP_000530 Entrez Gene 24717 Rat Entrez Gene 212541 Mouse Entrez Gene 6010 Human P08100

Background: Retinitis pigmentosa is an inherited progressive disease which is a major cause of blindness in western communities. It can be inherited as an autosomal dominant, autosomal recessive, or X-linked recessive disorder. In the autosomal dominant form, which comprises about 25% of total cases, approximately 30% of families have mutations in the gene encoding the rod photoreceptor-specific protein rhodopsin. This is the transmembrane protein which, when photoexcited, initiates the visual transduction cascade. Defects in this gene are also one of the causes of congenital stationary night blindness. [provided by RefSeq]

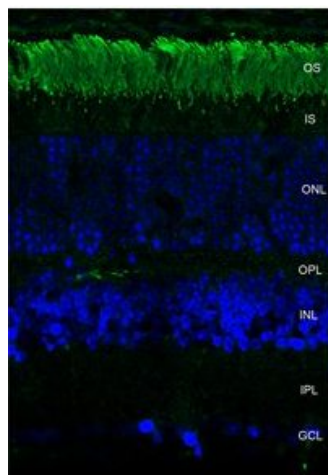
Synonyms: CSNBAD1; OPN2; RP4

Protein Families: Druggable Genome, Transmembrane



[View online »](#)

Product images:



Immunofluorescence of Rho using a dilution of Rhodopsin antibody