

## Product datasheet for **TA309463**

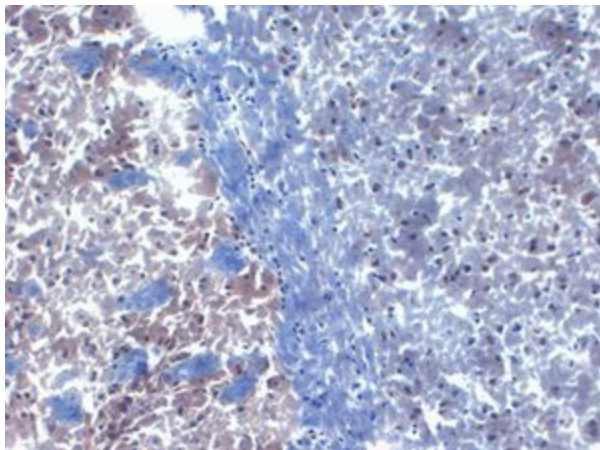
### PICK1 Mouse Monoclonal Antibody [Clone ID: S20-8]

#### Product data:

Product Type:	Primary Antibodies
Clone Name:	S20-8
Applications:	IHC
Recommended Dilution:	WB, IHC, IP
Reactivity:	Human, Mouse, Rat
Host:	Mouse
Isotype:	IgG2a
Clonality:	Monoclonal
Immunogen:	Fusion protein amino acids 101-30 of rat PICK1, accession number AAG48152
Formulation:	PBS pH7.4, 50% glycerol
Conjugation:	Unconjugated
Storage:	Store at -20°C as received.
Stability:	Stable for 12 months from date of receipt.
Gene Name:	protein interacting with PRKCA 1
Database Link:	<a href="#">NP_001034672</a> <a href="#">Entrez Gene 18693 Mouse</a> <a href="#">Entrez Gene 84591 Rat</a> <a href="#">Entrez Gene 9463 Human</a> <a href="#">Q9NRD5</a>
Synonyms:	PICK; PRKCABP
Note:	Detects ~45kDa.
Protein Families:	Druggable Genome



[View online »](#)

**Product images:**

IHC analysis of Pick1 in frozen sections of mouse brain extract using TA309463.