

## Product datasheet for **TA309445**

### Slc9a3 Rabbit Polyclonal Antibody

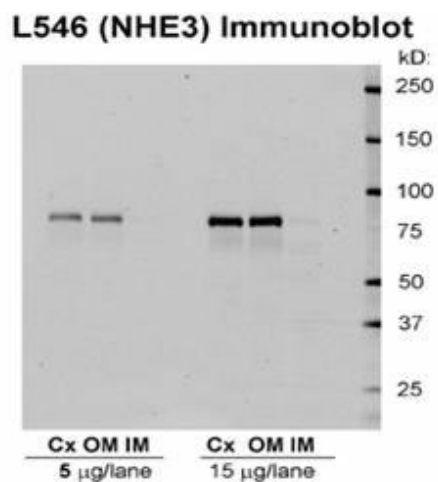
#### Product data:

Product Type:	Primary Antibodies
Applications:	WB
Recommended Dilution:	WB, ICC
Reactivity:	Rat, Mouse
Host:	Rabbit
Clonality:	Polyclonal
Immunogen:	Synthetic peptide mapping to AA 809 to 831 of rat sequence
Formulation:	PBS pH7.4, 50% glycerol
Concentration:	lot specific
Conjugation:	Unconjugated
Storage:	Store at -20°C as received.
Stability:	Stable for 12 months from date of receipt.
Gene Name:	solute carrier family 9 member A3
Database Link:	<a href="#">NP_036786</a> <a href="#">Entrez Gene 105243 Mouse</a> <a href="#">Entrez Gene 24784 Rat</a> <a href="#">P26433</a>
Synonyms:	MGC126718; MGC126720; NHE-3; NHE3
Note:	Detects ~84kDa.



[View online »](#)

## Product images:



Western blot analysis of NHE3 in rat kidney tissues using a 1:1000 dilution of TA309445.