

## Product datasheet for **TA309441**

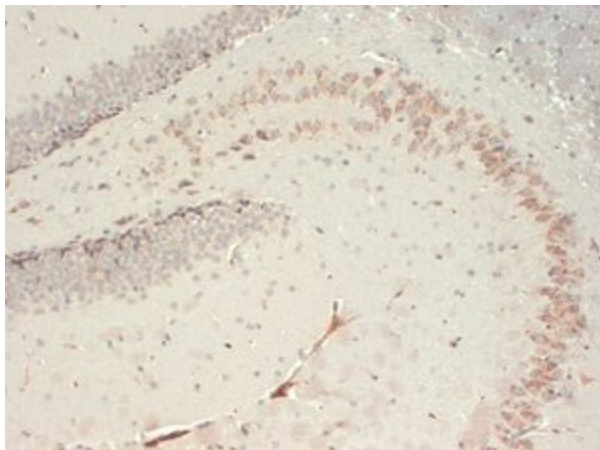
### Scn8a Mouse Monoclonal Antibody [Clone ID: S87A-10]

#### Product data:

Product Type:	Primary Antibodies
Clone Name:	S87A-10
Applications:	IHC
Recommended Dilution:	IP, IHC
Reactivity:	Human, Mouse, Rat
Host:	Mouse
Isotype:	IgG1
Clonality:	Monoclonal
Immunogen:	Synthetic peptide 459-476 (intracellular interdomain loop I-II) of rat Nav1.6.
Formulation:	PBS pH7.4, 50% glycerol
Conjugation:	Unconjugated
Storage:	Store at -20°C as received.
Stability:	Stable for 12 months from date of receipt.
Gene Name:	sodium voltage-gated channel alpha subunit 8
Database Link:	<a href="#">NP_062139</a> <a href="#">Entrez Gene 6334 Human</a> <a href="#">Entrez Gene 20273 Mouse</a> <a href="#">Entrez Gene 29710 Rat</a> <a href="#">O88420</a>
Synonyms:	CerIII; MED; NaCh6; Nav1.6; PN4



[View online »](#)

**Product images:**

IHC analysis of Nav1.6 using TA309441, tested on mouse brain hippocampus. Neurons with a good granular positivity in the cytoplasm and positivity showing axons.