

Product datasheet for **TA309434**

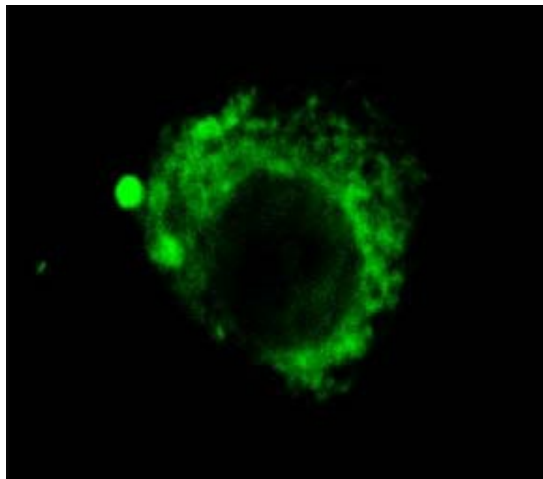
Lamp2 Rat Monoclonal Antibody [Clone ID: GL2A7]

Product data:

Product Type:	Primary Antibodies
Clone Name:	GL2A7
Applications:	IF
Recommended Dilution:	IP, ICC
Reactivity:	Mouse, Rabbit
Host:	Rat
Isotype:	IgG1
Clonality:	Monoclonal
Immunogen:	Purified preparation of mouse liver lysosomal membranes
Formulation:	PBS pH7.2, 50% glycerol
Concentration:	lot specific
Conjugation:	Unconjugated
Storage:	Store at -20°C as received.
Stability:	Stable for 12 months from date of receipt.
Gene Name:	lysosomal-associated membrane protein 2
Database Link:	NP_034815 Entrez Gene 16784 Mouse P17047
Synonyms:	CD107b; LAMP-2; LAMPB; LGP110
Note:	Recommended for use in ICC. The antibody will label the presumptive lysosomes and late endosomes in cells that have been permeabilized with saponin.



[View online »](#)

Product images:

Distribution of lysosomes in CEC was determined using Anti-LAMP2, shown with IF.