

Product datasheet for **TA309426**

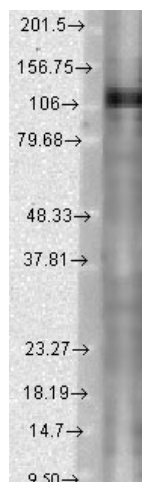
KCNC1 Mouse Monoclonal Antibody [Clone ID: S16B-8]

Product data:

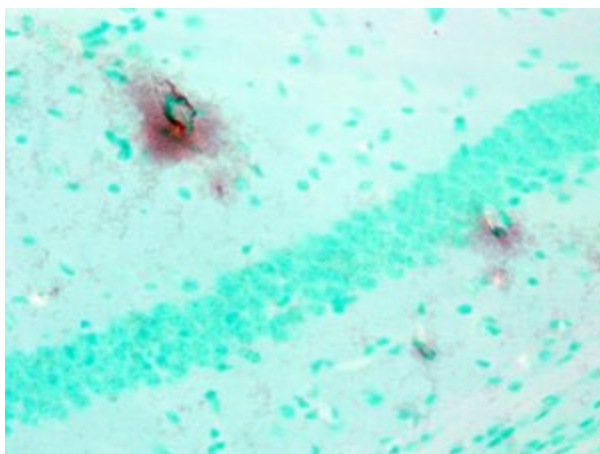
| | |
|-----------------------|--|
| Product Type: | Primary Antibodies |
| Clone Name: | S16B-8 |
| Applications: | IHC, WB |
| Recommended Dilution: | WB, IHC |
| Reactivity: | Human, Mouse, Rat |
| Host: | Mouse |
| Isotype: | IgG1 |
| Clonality: | Monoclonal |
| Immunogen: | Fusion protein amino acids 437-585 (C-terminus) or rat Kv3.1b, accession number NP_036988 |
| Formulation: | PBS pH7.2, 50% glycerol |
| Conjugation: | Unconjugated |
| Storage: | Store at -20°C as received. |
| Stability: | Stable for 12 months from date of receipt. |
| Gene Name: | potassium voltage-gated channel subfamily C member 1 |
| Database Link: | NP_001106212 Entrez Gene 16502 Mouse Entrez Gene 25327 Rat Entrez Gene 3746 Human P48547 |
| Synonyms: | EPM7; KV3.1; KV4; NGK2 |
| Note: | Detects ~110kDa. |
| Protein Families: | Druggable Genome, Ion Channels: Potassium, Transmembrane |



[View online »](#)

Product images:

Western blot analysis of KV3.1 in rat brain extract using a 1:1000 dilution of TA309426.



IHC analysis of KV3.1 in mouse brain tissue.