

## Product datasheet for **TA309411**

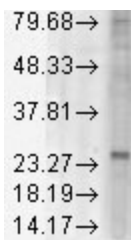
### KDEL Receptor (KDELRL1) Mouse Monoclonal Antibody [Clone ID: KR-10]

#### Product data:

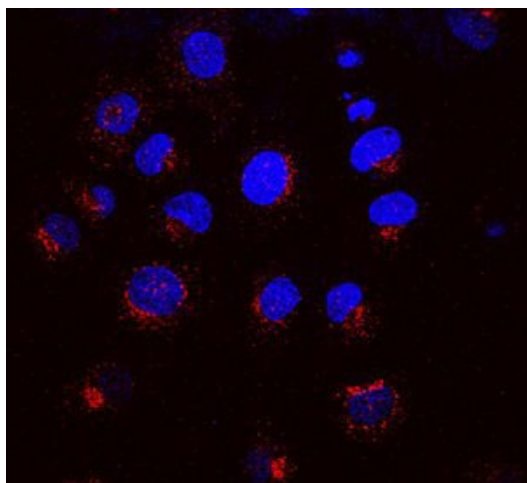
Product Type:	Primary Antibodies
Clone Name:	KR-10
Applications:	IF, WB
Recommended Dilution:	WB, IP, ICC, IHC
Reactivity:	Human, Monkey, Rat, Mouse, Rabbit, Porcine, Bovine, Sheep, Dog, Chicken, Xenopus, Hamster, Drosophila
Host:	Mouse
Isotype:	IgG1
Clonality:	Monoclonal
Immunogen:	A 21 residue synthetic peptide based on the bovine KDEL receptor and the peptide coupled to KLH
Formulation:	PBS pH7.2, 50% glycerol, 0.09% sodium azide
Purification:	Protein G purified
Conjugation:	Unconjugated
Storage:	Store at -20°C as received.
Stability:	Stable for 12 months from date of receipt.
Gene Name:	KDEL endoplasmic reticulum protein retention receptor 1
Database Link:	<a href="#">NP_006792</a> <a href="#">Entrez Gene 68137 Mouse</a> <a href="#">Entrez Gene 361577 Rat</a> <a href="#">Entrez Gene 484406 Dog</a> <a href="#">Entrez Gene 717928 Monkey</a> <a href="#">Entrez Gene 10945 Human</a> <a href="#">P24390</a>
Synonyms:	ERD2; ERD2.1; HDEL; PM23
Note:	Detects an ~25kDa protein corresponding to the molecular mass of KDEL on SDS-PAGE immunoblots.
Protein Families:	Druggable Genome, Transmembrane
Protein Pathways:	Vibrio cholerae infection



[View online »](#)

**Product images:**

Western blot analysis of KDEL in rat tissue lysate, using a 1:1000 dilution of anti-KDEL1.



Merged picture of KR-10 (red) with DAPI (blue) in NRK cells.