

Product datasheet for **TA309402**

HSP90AA1 Mouse Monoclonal Antibody [Clone ID: Hyb-K41220A]

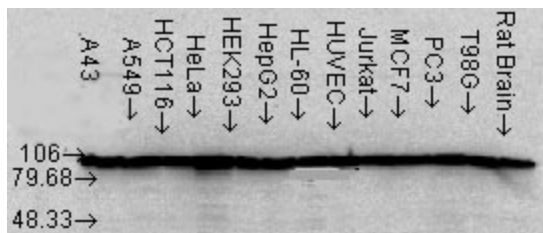
Product data:

Product Type:	Primary Antibodies
Clone Name:	Hyb-K41220A
Applications:	WB
Recommended Dilution:	WB, ELISA, IHC
Reactivity:	Human, Rat
Host:	Mouse
Isotype:	IgG2a
Clonality:	Monoclonal
Immunogen:	Recombinant human Hsp90alpha
Formulation:	PBS pH7.2, 50% glycerol
Concentration:	lot specific
Conjugation:	Unconjugated
Storage:	Store at -20°C as received.
Stability:	Stable for 12 months from date of receipt.
Gene Name:	heat shock protein 90kDa alpha family class A member 1
Database Link:	NP_001017963 Entrez Gene 299331 Rat Entrez Gene 3320 Human P07900
Synonyms:	EL52; HSP86; Hsp89; HSP89A; Hsp90; HSP90A; HSP90N; HSPC1; HSPCA; HSPCAL1; HSPCAL4; HSPN; LAP-2; LAP2
Note:	Detects 90kD proteins corresponding to the molecular mass of hsp90 alpha or beta.
Protein Families:	Druggable Genome
Protein Pathways:	Antigen processing and presentation, NOD-like receptor signaling pathway, Pathways in cancer, Progesterone-mediated oocyte maturation, Prostate cancer



[View online »](#)

Product images:



Western blot analysis of Hsp90 in cell lysates from 12 rat tissue lines at a 1:1000 dilution of TA309402.