

Product datasheet for **TA309390**

HSP90AB1 Mouse Monoclonal Antibody [Clone ID: H9010]

Product data:

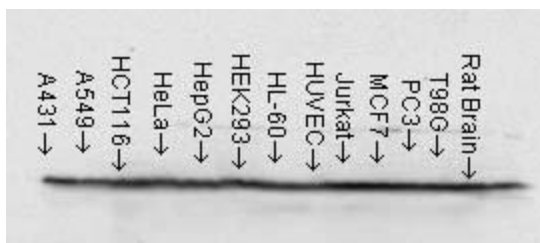
Product Type:	Primary Antibodies
Clone Name:	H9010
Applications:	WB
Recommended Dilution:	WB, IP, ELISA, IHC
Reactivity:	Human, Rabbit, Chicken, Rat, Dog
Host:	Mouse
Isotype:	IgG2a
Clonality:	Monoclonal
Immunogen:	Recombinant human Hsp90beta
Formulation:	PBS with 50% glycerol and 0.09% sodium azide
Concentration:	lot specific
Conjugation:	Unconjugated
Storage:	Store at -20°C as received.
Stability:	Stable for 12 months from date of receipt.
Gene Name:	heat shock protein 90kDa alpha family class B member 1
Database Link:	NP_031381 Entrez Gene 301252 Rat Entrez Gene 474919 Dog Entrez Gene 3326 Human P08238
Background:	HSP90 proteins are highly conserved molecular chaperones that have key roles in signal transduction, protein folding, protein degradation, and morphologic evolution. HSP90 proteins normally associate with other cochaperones and play important roles in folding newly synthesized proteins or stabilizing and refolding denatured proteins after stress. There are 2 major cytosolic HSP90 proteins, HSP90AA1 (MIM 140571), an inducible form, and HSP90AB1, a constitutive form. Other HSP90 proteins are found in endoplasmic reticulum (HSP90B1; MIM 191175) and mitochondria (TRAP1; MIM 606219) (Chen et al., 2005 [PubMed 16269234]). [supplied by OMIM]
Synonyms:	D6S182; HSP84; HSP90B; HSPC2; HSPCB
Protein Families:	Druggable Genome, Stem cell - Pluripotency



[View online »](#)

Protein Pathways: Antigen processing and presentation, NOD-like receptor signaling pathway, Pathways in cancer, Progesterone-mediated oocyte maturation, Prostate cancer

Product images:



Western blot analysis of Hsp90 using cell lysates from 12 human cancer cell lines at a 1:1000 dilution of TA309390.