

Product datasheet for **TA309384**

Hsc70 (HSPA8) Mouse Monoclonal Antibody [Clone ID: BB70]

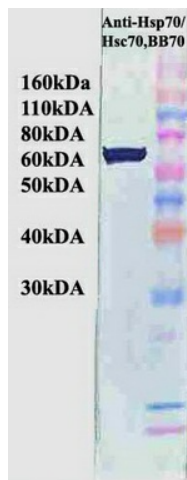
Product data:

Product Type:	Primary Antibodies
Clone Name:	BB70
Applications:	IF, IHC, WB
Recommended Dilution:	WB, IP, IHC
Reactivity:	Human, Mouse, Rat, Sheep, Dog, Bovine, Fish, Rabbit, Chicken, Xenopus, Drosophila, Yeast, Beluga, Hamster, Guinea Pig
Host:	Mouse
Isotype:	IgG2a
Clonality:	Monoclonal
Immunogen:	Chicken Hsp70/Hsp90 complex
Formulation:	50% glycerol
Conjugation:	Unconjugated
Storage:	Store at -20°C as received.
Stability:	Stable for 12 months from date of receipt.
Gene Name:	heat shock protein family A (Hsp70) member 8
Database Link:	NP_006588 Entrez Gene 15481 MouseEntrez Gene 24468 RatEntrez Gene 479406 DogEntrez Gene 3312 Human P11142
Synonyms:	HEL-33; HEL-S-72p; HSC54; HSC70; HSC71; HSP71; HSP73; HSPA10; LAP-1; LAP1; NIP71
Note:	Detects ~72 and ~73kDa proteins corresponding to the molecular mass of inducible Hsp and Hsc on SDS PAGE immunoblots.
Protein Families:	Stem cell - Pluripotency
Protein Pathways:	Antigen processing and presentation, Endocytosis, MAPK signaling pathway, Spliceosome

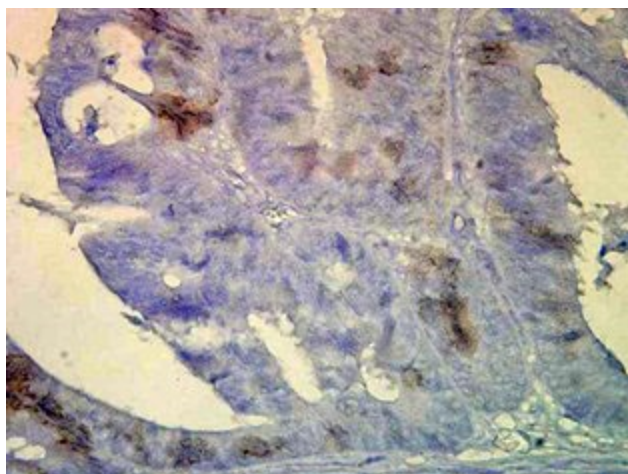


[View online »](#)

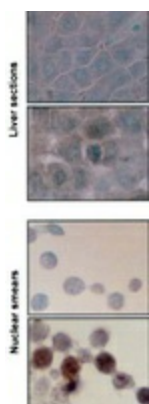
Product images:



Western blot analysis of Hsp70/Hsc70 in HeLa cell lysates using a 1:1000 dilution of anti-Hsc70.



Human colon tissue stained (brown) in inflammatory cells. Shown at a 1:100,000 dilution.



Hsp70/Hsc70 detection in paraffin embedded liver sections and nuclear sections of rat hepatocytes by staining with BB70. First pictures in series show two hours after exposure to stress, the second shows the control.