

## Product datasheet for **TA309330**

### ERp57 (PDIA3) Mouse Monoclonal Antibody [Clone ID: Map.ERP57]

#### Product data:

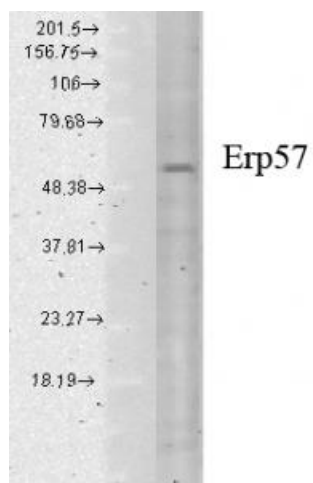
Product Type:	Primary Antibodies
Clone Name:	Map.ERP57
Applications:	WB
Recommended Dilution:	WB, IP, IHC
Reactivity:	Human, Mouse, Bovine, Dog, Monkey, Porcine, Rabbit, Rat, Hamster, Guinea Pig
Host:	Mouse
Isotype:	IgG1
Clonality:	Monoclonal
Immunogen:	Human Recombinant Erp57 (Grp58)
Formulation:	PBS, 0.05% BSA
Concentration:	lot specific
Conjugation:	Unconjugated
Storage:	Store at -20°C as received.
Stability:	Stable for 12 months from date of receipt.
Gene Name:	protein disulfide isomerase family A member 3
Database Link:	<a href="#">NP_005304</a> <a href="#">Entrez Gene 14827 Mouse</a> <a href="#">Entrez Gene 29468 Rat</a> <a href="#">Entrez Gene 478279 Dog</a> <a href="#">Entrez Gene 711029 Monkey</a> <a href="#">Entrez Gene 2923 Human</a> <a href="#">P30101</a>
Background:	This gene encodes a protein of the endoplasmic reticulum that interacts with lectin chaperones calreticulin and calnexin to modulate folding of newly synthesized glycoproteins. The protein was once thought to be a phospholipase; however, it has been demonstrated that the protein actually has protein disulfide isomerase activity. It is thought that complexes of lectins and this protein mediate protein folding by promoting formation of disulfide bonds in their glycoprotein substrates. [provided by RefSeq]
Synonyms:	ER60; ERp57; ERp60; ERp61; GRP57; GRP58; HEL-S-93n; HEL-S-269; HsT17083; P58; PI-PLC
Protein Families:	Druggable Genome



[View online »](#)

Protein Pathways: Antigen processing and presentation

**Product images:**



Western blot analysis of ERP57 in human cell lysates using a 1:1000 dilution of TA309330.