

Product datasheet for **TA309327**

Scnn1b Rabbit Polyclonal Antibody

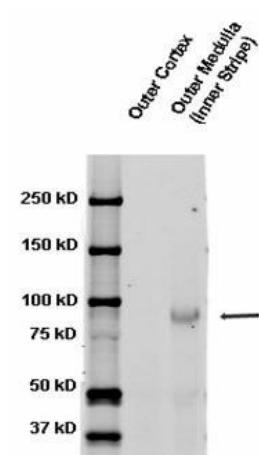
Product data:

Product Type:	Primary Antibodies
Applications:	IHC, WB
Recommended Dilution:	WB, IHC, IP
Reactivity:	Mouse, Rat
Host:	Rabbit
Clonality:	Polyclonal
Immunogen:	Produced against the C-terminal tail of rat beta ENaC (antibody designation 3755-2). AA617-638.
Formulation:	PBS, 50% glycerol
Conjugation:	Unconjugated
Storage:	Store at -20°C as received.
Stability:	Stable for 12 months from date of receipt.
Gene Name:	sodium channel, nonvoltage-gated 1 beta
Database Link:	NP_035455 Entrez Gene 24767 Rat Entrez Gene 20277 Mouse Q9WU38
Synonyms:	BESC1; Beta-ENaC; Beta-NaCH; ENaCb; ENaCbeta; SCNEB
Note:	Detects ~87kDa.

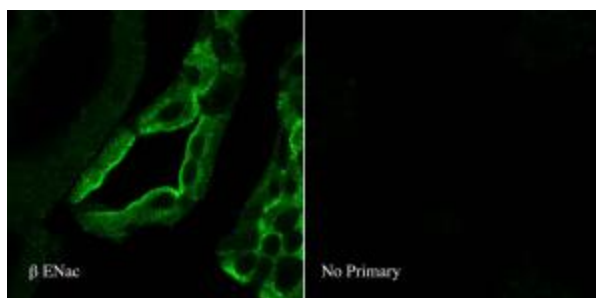


[View online »](#)

Product images:



Western blot analysis of ENaC beta in rat kidney tissues using a 1:1000 dilution of TA309327.



IHC analysis of ENaC beta in rat kidney tissues using a dilution of TA309327.