

## Product datasheet for **TA309301**

### **CAMK2A Mouse Monoclonal Antibody [Clone ID: 6G9]**

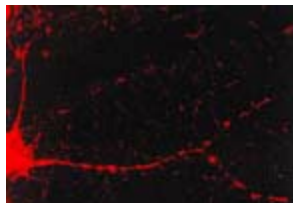
#### **Product data:**

<b>Product Type:</b>	Primary Antibodies
<b>Clone Name:</b>	6G9
<b>Applications:</b>	IHC
<b>Recommended Dilution:</b>	IF, IP, WB, IHC, RIA, ELISA
<b>Reactivity:</b>	Mouse, Rat, Bovine, Human
<b>Host:</b>	Mouse
<b>Isotype:</b>	IgG1
<b>Clonality:</b>	Monoclonal
<b>Immunogen:</b>	Partially purified rat CaMKII
<b>Formulation:</b>	Rabbit antiserum
<b>Conjugation:</b>	Unconjugated
<b>Storage:</b>	Store at -20°C as received.
<b>Stability:</b>	Stable for 12 months from date of receipt.
<b>Gene Name:</b>	calcium/calmodulin dependent protein kinase II alpha
<b>Database Link:</b>	<a href="#">NP_057065</a> <a href="#">Entrez Gene 12322 Mouse</a> <a href="#">Entrez Gene 25400 Rat</a> <a href="#">Entrez Gene 815 Human</a> <a href="#">Q9UQM7</a>
<b>Synonyms:</b>	CAMKA
<b>Note:</b>	Detects ~50-60kDa protein, corresponding to the molecular mass of CaMKII alpha subunit on SDS page immunoblots. Recognizes both phosphorylated and non-phosphorylated forms.
<b>Protein Families:</b>	Druggable Genome, Protein Kinase
<b>Protein Pathways:</b>	Calcium signaling pathway, ErbB signaling pathway, Glioma, GnRH signaling pathway, Long-term potentiation, Melanogenesis, Neurotrophin signaling pathway, Olfactory transduction, Oocyte meiosis, Wnt signaling pathway



[View online »](#)

**Product images:**



IHC staining of hippocampal neurons