

Product datasheet for **TA309295**

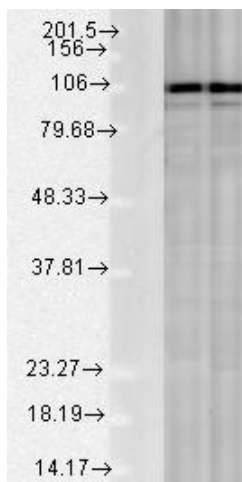
Calnexin (CANX) Rabbit Polyclonal Antibody

Product data:

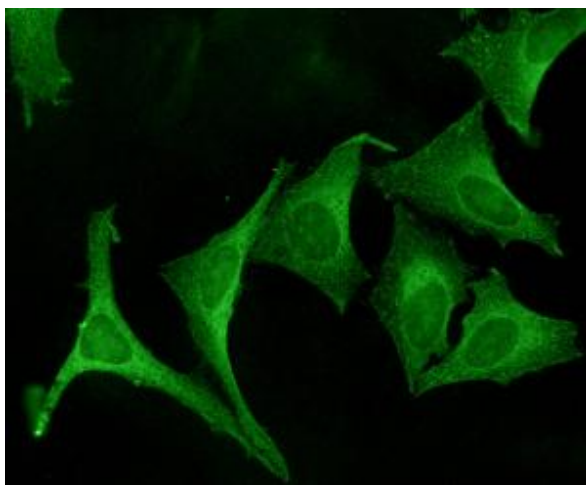
Product Type:	Primary Antibodies
Applications:	IHC, WB
Recommended Dilution:	WB, IHC, ICC, IP, FC
Reactivity:	Human, Monkey, Mouse, Rat, Bovine, Chicken, Dog, Porcine, Quail, Rabbit, Sheep, Drosophila, Xenopus, Hamster, Guinea Pig
Host:	Rabbit
Clonality:	Polyclonal
Immunogen:	Dog calnexin C-terminal synthetic peptide conjugated to KLH. Identical to human, mouse and rat calnexin sequences over these residues.
Formulation:	PBS with 0.02% sodium azide
Concentration:	lot specific
Conjugation:	Unconjugated
Storage:	Store at -20°C as received.
Stability:	Stable for 12 months from date of receipt.
Gene Name:	calnexin
Database Link:	NP_001019820 Entrez Gene 12330 Mouse Entrez Gene 29144 Rat Entrez Gene 403908 Dog Entrez Gene 704794 Monkey Entrez Gene 821 Human P27824
Synonyms:	CNX; IP90; P90
Note:	Detects ~90kDa.
Protein Families:	Druggable Genome, Transmembrane
Protein Pathways:	Antigen processing and presentation



[View online »](#)

Product images:

Western blot analysis of Calnexin-CT in rat tissues using a 1:1000 dilution of TA309295.



IHC analysis of Calnexin-CT using TA309295, tested in HeLa cell lysates.