

Product datasheet for **TA309293**

Calnexin (CANX) Rabbit Polyclonal Antibody

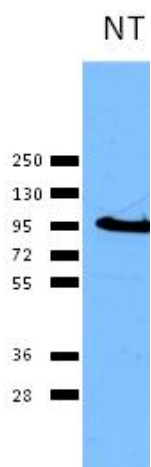
Product data:

Product Type:	Primary Antibodies
Applications:	IF, WB
Recommended Dilution:	WB, IP, ICC
Reactivity:	Human, Mouse, Rat, Bovine, Chicken, Dog, Porcine, Monkey, Rabbit, Sheep, Xenopus, Hamster, Guinea Pig
Host:	Rabbit
Clonality:	Polyclonal
Immunogen:	A 19 residue synthetic peptide based on canine calnexin and the peptide coupled to KLH.
Formulation:	PBS with 0.02% sodium azide
Concentration:	lot specific
Conjugation:	Unconjugated
Storage:	Store at -20°C as received.
Stability:	Stable for 12 months from date of receipt.
Gene Name:	calnexin
Database Link:	NP_001019820 Entrez Gene 12330 Mouse Entrez Gene 29144 Rat Entrez Gene 403908 Dog Entrez Gene 704794 Monkey Entrez Gene 821 Human P27824
Synonyms:	CNX; IP90; P90
Note:	Detects ~90kDa.
Protein Families:	Druggable Genome, Transmembrane
Protein Pathways:	Antigen processing and presentation

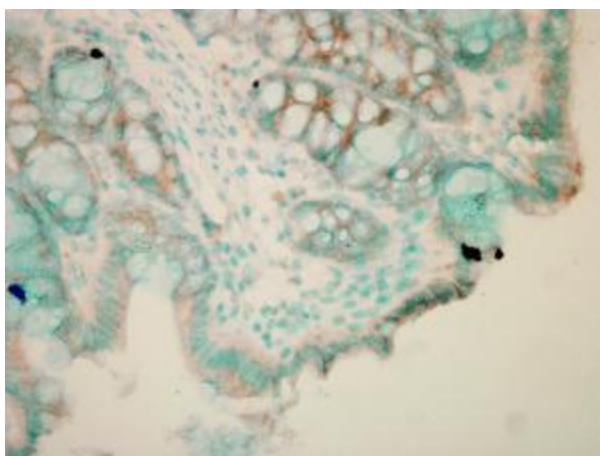


[View online »](#)

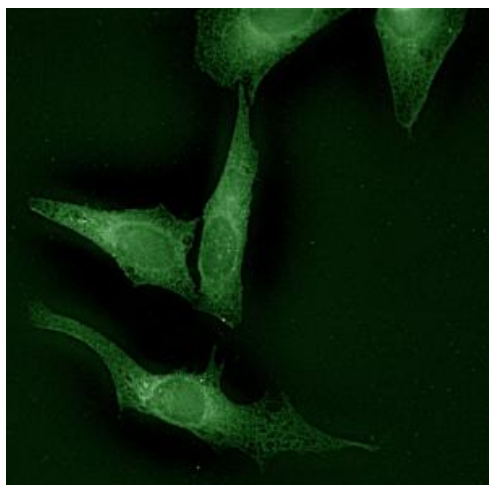
Product images:



Western blot analysis of Calnexin-NT in HeLa cell lysates using a 1:1000 dilution of TA309293.



Calnexin-NT visualized using TA309293, tested on mouse colon with colitis.



Calnexin-NT visualized using TA309293, tested on HeLa cells.