

Product datasheet for **TA309275**

Slc18a2 Sheep Polyclonal Antibody

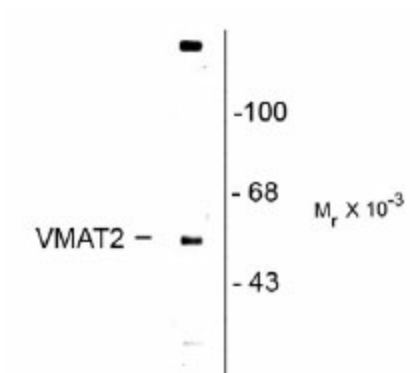
Product data:

Product Type:	Primary Antibodies
Applications:	WB
Recommended Dilution:	WB: 1:1000
Reactivity:	Rat
Host:	Sheep
Clonality:	Polyclonal
Immunogen:	Synthetic peptide corresponding to amino acid residues from the intracellular C-terminal region conjugated to KLH
Formulation:	100 µl in 10 mM HEPES (pH 7.5), 150 mM NaCl, 100 µg per ml BSA and 50% glycerol.
Purification:	Affinity Purified
Conjugation:	Unconjugated
Storage:	Store at -20°C as received.
Stability:	Stable for 12 months from date of receipt.
Predicted Protein Size:	57 kDa
Gene Name:	solute carrier family 18 (vesicular monoamine), member 2
Database Link:	NP_766111 Entrez Gene 25549 Rat Q8BRU6
Background:	The vesicular monoamine transporter acts to accumulate cytosolic monoamines into synaptic vesicles, using the proton gradient maintained across the synaptic vesicular membrane. Its proper function is essential to the correct activity of the monoaminergic systems that have been implicated in several human neuropsychiatric disorders. The transporter is a site of action of important drugs, including reserpine and tetrabenazine (summary by Peter et al., 1993 [PubMed 7905859]). See also SLC18A1 (MIM 193002). [supplied by OMIM]
Synonyms:	MGC26538; MGC120477; MGC120478; SVAT; SVMT; VAT2; VMAT2



[View online »](#)

Product images:



Western blot of rat caudate lysate showing specific immunolabeling of the ~57k VMAT2 protein.