

## Product datasheet for **TA309272**

### PGP9.5 (UCHL1) Chicken Polyclonal Antibody

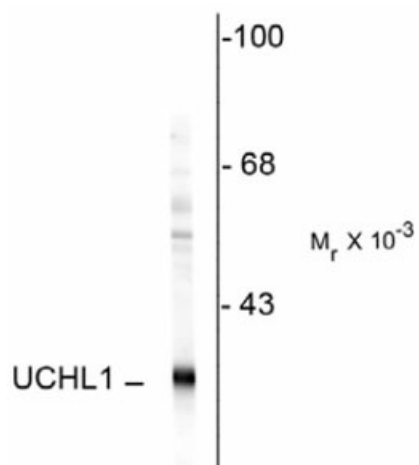
#### Product data:

Product Type:	Primary Antibodies
Applications:	IF, WB
Recommended Dilution:	WB: 1:2,500, IF: 1:500
Reactivity:	Human, Rat
Host:	Chicken
Isotype:	IgY
Clonality:	Polyclonal
Immunogen:	Recombinant full length human UCHL1 purified from E. coli
Formulation:	total IgY fraction in PBS + 10 mM NaN <sub>3</sub> .
Purification:	Total IgY fraction
Conjugation:	Unconjugated
Storage:	Store at -20°C as received.
Stability:	Stable for 12 months from date of receipt.
Predicted Protein Size:	24 kDa
Gene Name:	ubiquitin C-terminal hydrolase L1
Database Link:	<a href="#">NP_004172</a> <a href="#">Entrez Gene 29545 Rat</a> <a href="#">Entrez Gene 7345 Human</a> <a href="#">P09936</a>
Background:	The protein encoded by this gene belongs to the peptidase C12 family. This enzyme is a thiol protease that hydrolyzes a peptide bond at the C-terminal glycine of ubiquitin. This gene is specifically expressed in the neurons and in cells of the diffuse neuroendocrine system. Mutations in this gene may be associated with Parkinson disease.
Synonyms:	HEL-117; NDGOA; PARK5; PGP 9.5; PGP9.5; PGP95; Uch-L1
Protein Families:	Druggable Genome, Protease
Protein Pathways:	Parkinson's disease

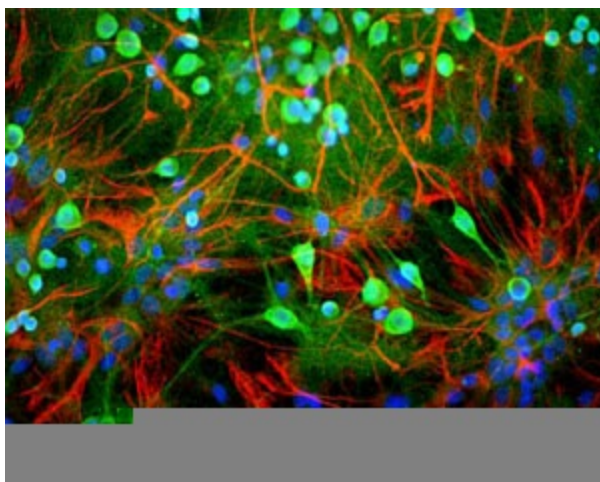


[View online »](#)

## Product images:



Western blot of rat hippocampal homogenate showing specific immunolabeling of the ~24k UCHL1 protein.



Rat mixed neuron/glia cultures stained with anti-UCHL1 antibody (green) and rabbit anti-GFAP antibody (cat. #620-GFAP) (red). Blue is a DNA stain.