

Product datasheet for **TA309270**

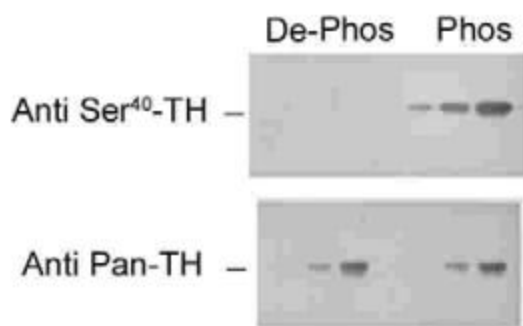
Th Rabbit Polyclonal Antibody

Product data:

Product Type:	Primary Antibodies
Applications:	IHC, WB
Recommended Dilution:	WB: 1:1,000, IHC: 1:1000, IF: 1:1,000
Reactivity:	Human, Mouse, Rat
Modifications:	Phospho-specific
Host:	Rabbit
Isotype:	IgG
Clonality:	Polyclonal
Immunogen:	Synthetic phospho-peptide corresponding to amino acid residues surrounding Ser40 conjugated to KLH
Formulation:	100 µl in 10 mM HEPES (pH 7.5), 150 mM NaCl, 100 µg per ml BSA and 50% glycerol.
Purification:	Affinity Purified
Conjugation:	Unconjugated
Storage:	Store at -20°C as received.
Stability:	Stable for 12 months from date of receipt.
Predicted Protein Size:	60 kDa
Gene Name:	tyrosine hydroxylase
Database Link:	NP_036872 Entrez Gene 7054 Human Entrez Gene 21823 Mouse Entrez Gene 25085 Rat P04177
Synonyms:	DYT5b; DYT14; TYH



[View online »](#)

Product images:

Western blot of recombinant phospho- and dephospho-TH showing selective immunolabeling by the phospho-specific antibody of the ~60k TH phosphorylated at Ser40. The pan-specific antibody (anti-pan-TH) recognized both the phospho- and dephospho-TH; while most importantly, the phospho-specific antibody (anti-Ser40 TH) recognized only phospho-TH.



Immunohistochemical staining of retina with the pan-tyrosine hydroxylase (pan-TH) and phospho-specific tyrosine hydroxylase (phospho-TH) antibodies. The pan-TH antibody shows extensive labeling in this photomicrograph of the retina. In contrast, the phospho-TH antibody selectively labels only the two amacrine cells in this light-stimulated retina example.