

Product datasheet for **TA309264**

Tph1 Rabbit Polyclonal Antibody

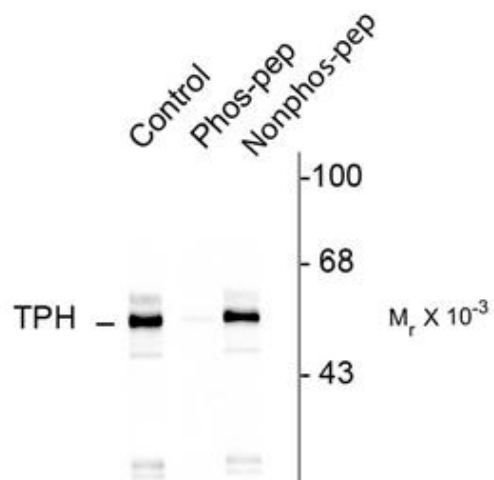
Product data:

Product Type:	Primary Antibodies
Applications:	WB
Recommended Dilution:	WB: 1:1000
Reactivity:	Human, Rat
Modifications:	Phospho-specific
Host:	Rabbit
Isotype:	IgG
Clonality:	Polyclonal
Immunogen:	Synthetic phospho-peptide corresponding to amino acid residues surrounding Ser260 conjugated to KLH
Formulation:	100 µl in 10 mM HEPES (pH 7.5), 150 mM NaCl, 100 µg per ml BSA and 50% glycerol.
Purification:	Affinity Purified
Conjugation:	Unconjugated
Storage:	Store at -20°C as received.
Stability:	Stable for 12 months from date of receipt.
Predicted Protein Size:	55 kDa
Gene Name:	tryptophan hydroxylase 1
Database Link:	NP_001094104 Entrez Gene 7166 Human Entrez Gene 24848 Rat P09810
Synonyms:	MGC119994; TPH; TPRH; TRPH



[View online »](#)

Product images:



Western blot of rat brainstem lysate showing specific immunolabeling of the ~55k TPH protein phosphorylated at Ser260. The labeling is specifically blocked by the phosphopeptide (Phos-pep) used as antigen. The corresponding non-phosphopeptide (Nonphos-pep) did not block the immunolabeling.