

Product datasheet for **TA309262**

Tph2 Rabbit Polyclonal Antibody

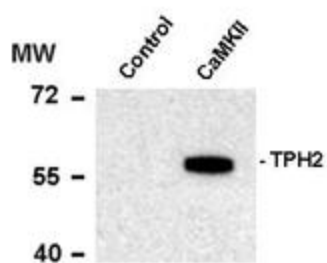
Product data:

Product Type:	Primary Antibodies
Applications:	WB
Recommended Dilution:	WB: 1:1000
Reactivity:	Rat
Modifications:	Phospho-specific
Host:	Rabbit
Isotype:	IgG
Clonality:	Polyclonal
Immunogen:	Synthetic phospho-peptide corresponding to amino acid residues surrounding Ser19 conjugated to KLH
Formulation:	100 µl in 10 mM HEPES (pH 7.5), 150 mM NaCl, 100 µg per ml BSA and 50% glycerol.
Purification:	Affinity Purified
Conjugation:	Unconjugated
Storage:	Store at -20°C as received.
Stability:	Stable for 12 months from date of receipt.
Predicted Protein Size:	55 kDa
Gene Name:	tryptophan hydroxylase 2
Database Link:	NP_776211 Entrez Gene 317675 Rat Q8CGU9
Synonyms:	ADHD7; FLJ37295; MGC138871; MGC138872; NTPH



[View online »](#)

Product images:



Western blot of recombinant tryptophan hydroxylase incubated in the absence (Control) and presence of Ca²⁺/calmodulin dependent kinase II (CaMKII) showing specific immunolabeling of the ~55k tryptophan hydroxylase protein phosphorylated at Ser19.