

Product datasheet for **TA309251**

TAOK2 Rabbit Polyclonal Antibody

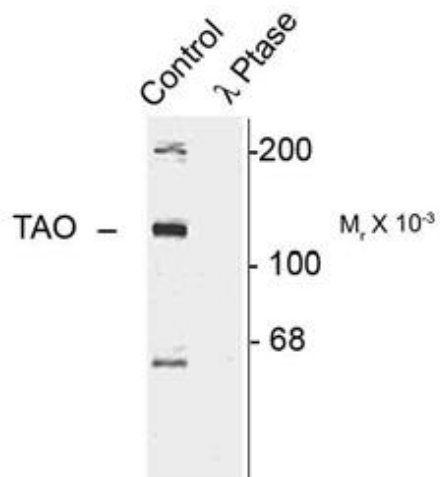
Product data:

Product Type:	Primary Antibodies
Applications:	WB
Recommended Dilution:	WB: 1:1000
Reactivity:	Human, Mouse, Rat
Modifications:	Phospho-specific
Host:	Rabbit
Isotype:	IgG
Clonality:	Polyclonal
Immunogen:	Synthetic phospho-peptide corresponding to amino acid residues surrounding Ser181 conjugated to KLH
Formulation:	100 µl in 10 mM HEPES (pH 7.5), 150 mM NaCl, 100 µg per ml BSA and 50% glycerol.
Purification:	Affinity Purified
Conjugation:	Unconjugated
Storage:	Store at -20°C as received.
Stability:	Stable for 12 months from date of receipt.
Predicted Protein Size:	120 kDa
Gene Name:	TAO kinase 2
Database Link:	NP_057235 Entrez Gene 64666 Rat Entrez Gene 381921 Mouse Entrez Gene 9344 Human Q9UL54
Background:	TAOK2 is a serine/threonine kinase that has a role in cell signaling, microtubule organization and stability, and in apoptosis (Moore et al., 2000 [PubMed 10660600]; Zihni et al., 2007 [PubMed 17158878]). [supplied by OMIM]
Synonyms:	MAP3K17; PSK; PSK1; PSK1-BETA; TAO1; TAO2
Protein Families:	Druggable Genome, Protein Kinase, Transmembrane
Protein Pathways:	MAPK signaling pathway



[View online »](#)

Product images:



Western blot of rat cortex lysate showing specific immunolabeling of the ~120k TAO2 phosphorylated at Ser181 (Control). The phosphospecificity of this labeling is shown in the second lane (lambda-phosphatase: λ-Ptase). The blot is identical to the control except that it was incubated in λ-Ptase (1200 units for 30 min) before being exposed to the Ser181 TAO2 antibody. The immunolabeling is completely eliminated by treatment with λ-Ptase.