

Product datasheet for **TA309248**

Syt1 Rabbit Polyclonal Antibody

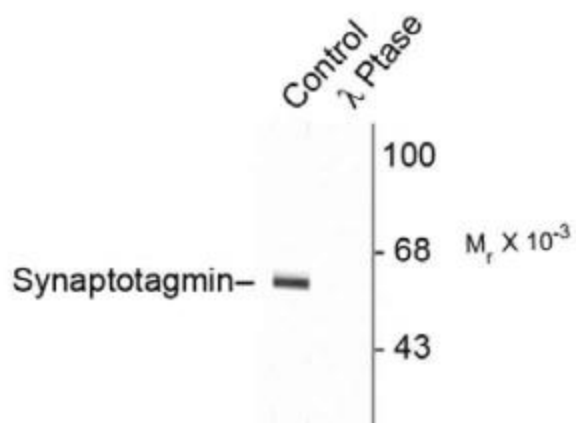
Product data:

| | |
|-------------------------|---|
| Product Type: | Primary Antibodies |
| Applications: | WB |
| Recommended Dilution: | WB: 1:1000, IHC: 1:400 |
| Reactivity: | Rat |
| Modifications: | Phospho-specific |
| Host: | Rabbit |
| Isotype: | IgG |
| Clonality: | Polyclonal |
| Immunogen: | Synthetic phospho-peptide corresponding to amino acid residues surrounding Thr202 conjugated to KLH |
| Formulation: | 100 µl in 10 mM HEPES (pH 7.5), 150 mM NaCl, 100 µg per ml BSA and 50% glycerol. |
| Purification: | Affinity Purified |
| Conjugation: | Unconjugated |
| Storage: | Store at -20°C as received. |
| Stability: | Stable for 12 months from date of receipt. |
| Predicted Protein Size: | 60/62 kDa |
| Gene Name: | synaptotagmin 1 |
| Database Link: | NP_001028852 Entrez Gene 25716 Rat P21707 |
| Synonyms: | DKFZp781D2042; P65; SVP65; SYT; Sytl |



[View online »](#)

Product images:



Western blot of rat cortex lysate showing specific immunolabeling of the ~60k - ~62k synaptotagmin phosphorylated at Thr202 (Control). The phosphospecificity of this labeling is shown in the second lane (lambda-phosphatase: λ-Ptase). The blot is identical to the control except that it was incubated in λ-Ptase (1200 units for 30 min) before being exposed to the Thr202 synaptotagmin antibody. The immunolabeling is completely eliminated by treatment with λ-Ptase.