

## Product datasheet for **TA309247**

### Syt1 Rabbit Polyclonal Antibody

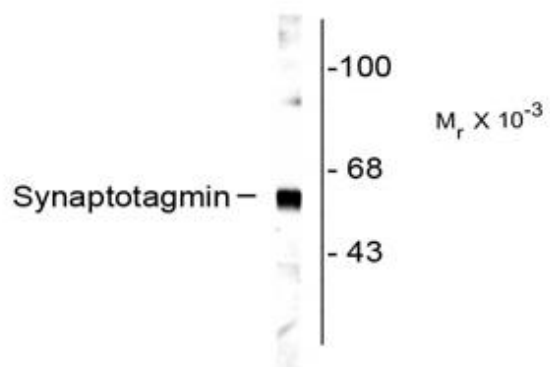
#### Product data:

Product Type:	Primary Antibodies
Applications:	WB
Recommended Dilution:	WB: 1:1000
Reactivity:	Rat
Host:	Rabbit
Isotype:	IgG
Clonality:	Polyclonal
Immunogen:	Synthetic peptide corresponding to amino acid residues specific to synaptotagmin 1 conjugated to KLH
Formulation:	100 µl in 10 mM HEPES (pH 7.5), 150 mM NaCl, 100 µg per ml BSA and 50% glycerol.
Purification:	Affinity Purified
Conjugation:	Unconjugated
Storage:	Store at -20°C as received.
Stability:	Stable for 12 months from date of receipt.
Predicted Protein Size:	65 kDa
Gene Name:	synaptotagmin 1
Database Link:	<a href="#">NP_001028852</a> <a href="#">Entrez Gene 25716 Rat</a> <a href="#">P21707</a>
Synonyms:	DKFZp781D2042; P65; SVP65; SYT; Sytl



[View online »](#)

## Product images:



Western blot of rat cortex lysate showing specific labeling of the ~65k synaptotagmin protein.