

Product datasheet for **TA309246**

Synpr Rabbit Polyclonal Antibody

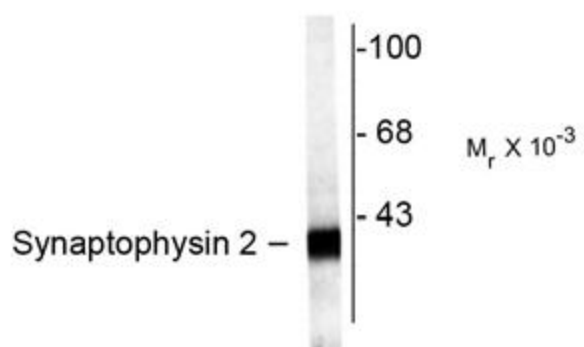
Product data:

| | |
|-------------------------|---|
| Product Type: | Primary Antibodies |
| Applications: | WB |
| Recommended Dilution: | WB: 1:1000 |
| Reactivity: | Rat |
| Host: | Rabbit |
| Isotype: | IgG |
| Clonality: | Polyclonal |
| Immunogen: | Synthetic peptide corresponding to amino acid residues from the C-terminal region conjugated to KLH |
| Formulation: | 100 µl in 10 mM HEPES (pH 7.5), 150 mM NaCl, 100 µg per ml BSA and 50% glycerol. |
| Purification: | Affinity Purified |
| Conjugation: | Unconjugated |
| Storage: | Store at -20°C as received. |
| Stability: | Stable for 12 months from date of receipt. |
| Predicted Protein Size: | 38 kDa |
| Gene Name: | synaptoporin |
| Database Link: | NP_076464 Entrez Gene 66030 Rat P22831 |
| Synonyms: | DKFZp686G0883; MGC26651; SPO; synaptoporin |



[View online »](#)

Product images:



Western blot of rat hippocampal lysate showing specific labeling of the ~38k synaptophysin 2 protein.