

Product datasheet for **TA309244**

VAMP1 Mouse Monoclonal Antibody [Clone ID: SP10]

Product data:

Product Type:	Primary Antibodies
Clone Name:	SP10
Applications:	WB
Recommended Dilution:	WB: 1:1000, IHC: 1:100
Reactivity:	Bovine, Human, Mouse, Porcine, Hamster, Rat, Rabbit
Host:	Mouse
Isotype:	IgM
Clonality:	Monoclonal
Immunogen:	Synaptic immunoprecipitate (crude) from human brain
Formulation:	100 µl in 10 mM HEPES (pH 7.5), 150 mM NaCl, 100 µg per ml BSA and 50% glycerol.
Purification:	IgM Purified
Conjugation:	Unconjugated
Storage:	Store at -20°C as received.
Stability:	Stable for 12 months from date of receipt.
Predicted Protein Size:	16 kDa
Gene Name:	vesicle associated membrane protein 1
Database Link:	NP_954740 Entrez Gene 22317 Mouse Entrez Gene 25624 Rat Entrez Gene 6843 Human P23763

Background: Synaptobrevins/VAMPs, syntaxins, and the 25-kD synaptosomal-associated protein SNAP25 are the main components of a protein complex involved in the docking and/or fusion of synaptic vesicles with the presynaptic membrane. VAMP1 is a member of the vesicle-associated membrane protein (VAMP)/synaptobrevin family. Multiple alternative splice variants that encode proteins with alternative carboxy ends have been described, but the full-length nature of some variants has not been defined. [provided by RefSeq]

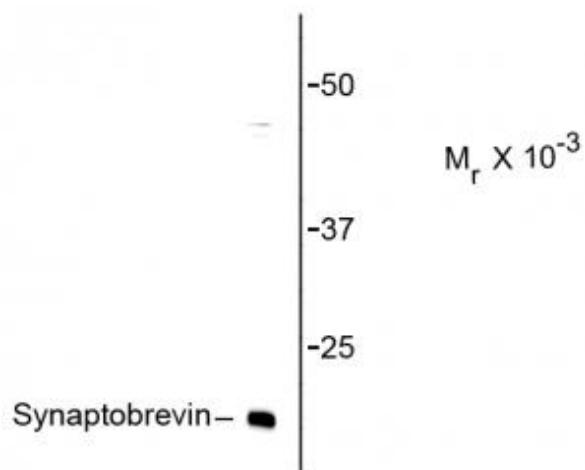
Synonyms: SPAX1; SYB1; VAMP-1
Protein Families: Secreted Protein, Transmembrane



[View online »](#)

Protein Pathways: SNARE interactions in vesicular transport

Product images:



Western blot of rat brain lysate showing specific immunolabeling of the ~ 16k synaptobrevin protein.