

## Product datasheet for **TA309242**

### Syn1 Rabbit Polyclonal Antibody

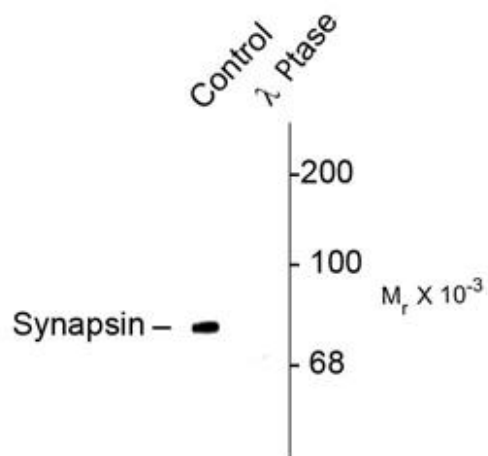
#### Product data:

Product Type:	Primary Antibodies
Applications:	WB
Recommended Dilution:	WB:1:1,000, IF: 1:500
Reactivity:	Rat
Modifications:	Phospho-specific
Host:	Rabbit
Isotype:	IgG
Clonality:	Polyclonal
Immunogen:	Synthetic phospho-peptide corresponding to amino acid residues surrounding Ser549 conjugated to KLH
Formulation:	100 µl in 10 mM HEPES (pH 7.5), 150 mM NaCl, 100 µg per ml BSA and 50% glycerol.
Purification:	Affinity Purified
Conjugation:	Unconjugated
Storage:	Store at -20°C as received.
Stability:	Stable for 12 months from date of receipt.
Predicted Protein Size:	78 kDa
Gene Name:	synapsin I
Database Link:	<a href="#">NP_062006</a> <a href="#">Entrez Gene 24949 Rat</a> <a href="#">P09951</a>
Synonyms:	SYN1a; SYN1b; SYN1



[View online »](#)

## Product images:



Western blot of rat cortex lysate showing specific immunolabeling of the ~78k synapsin I phosphorylated at Ser549 (Control). The phosphospecificity of this labeling is shown in the second lane (lambda-phosphatase: λ-Ptase). The blot is identical to the control except that it was incubated in λ-Ptase (1200 units for 30 min) before being exposed to the phospho Ser549 synapsin I antibody. The immunolabeling is completely eliminated by treatment with λ-Ptase.