

Product datasheet for **TA309239**

Synapsin I (SYN1) Rabbit Polyclonal Antibody

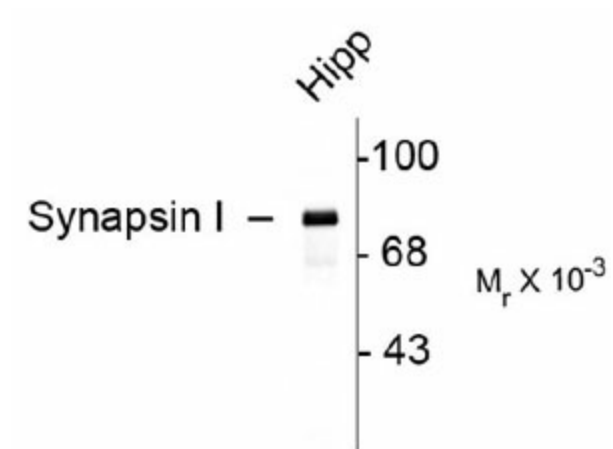
Product data:

Product Type:	Primary Antibodies
Applications:	WB
Recommended Dilution:	WB: 1:1000
Reactivity:	Human, Mouse, Rat
Host:	Rabbit
Isotype:	IgG
Clonality:	Polyclonal
Immunogen:	Native protein purified from bovine brain
Formulation:	neat serum
Purification:	Neat Serum
Conjugation:	Unconjugated
Storage:	Store at -20°C as received.
Stability:	Stable for 12 months from date of receipt.
Predicted Protein Size:	78 kDa
Gene Name:	synapsin I
Database Link:	NP_008881 Entrez Gene 20964 Mouse Entrez Gene 24949 Rat Entrez Gene 6853 Human P17600
Synonyms:	SYN1a; SYN1b; SYNI



[View online »](#)

Product images:



Western blot of rat hippocampal (Hipp) lysate showing specific immunolabeling of the ~78k synapsin I doublet protein.