

## Product datasheet for **TA309238**

### Synapsin I (SYN1) Rabbit Polyclonal Antibody

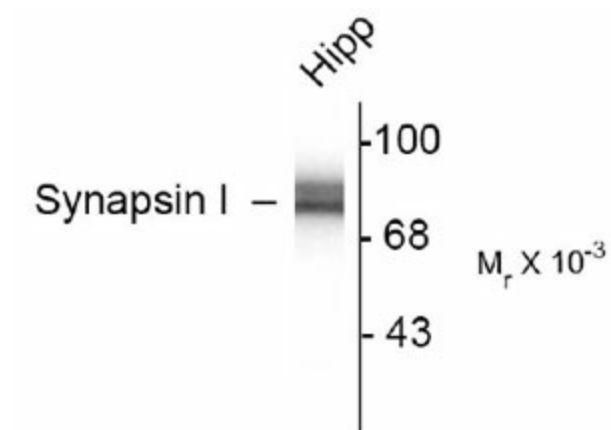
#### Product data:

Product Type:	Primary Antibodies
Applications:	WB
Recommended Dilution:	WB: 1:1000, IF: 1:2000, IHC: 1:2000, IP: 1ug per 200ug lysate
Reactivity:	Human, Mouse, Rat
Host:	Rabbit
Isotype:	IgG
Clonality:	Polyclonal
Immunogen:	Native protein purified from bovine brain
Formulation:	Lyophilized
Purification:	Affinity Purified
Conjugation:	Unconjugated
Storage:	Store at -20°C as received.
Stability:	Stable for 12 months from date of receipt.
Predicted Protein Size:	78 kDa
Gene Name:	synapsin I
Database Link:	<a href="#">NP_008881</a> <a href="#">Entrez Gene 20964 Mouse</a> <a href="#">Entrez Gene 24949 Rat</a> <a href="#">Entrez Gene 6853 Human</a> <a href="#">P17600</a>
Synonyms:	SYN1a; SYN1b; SYN1



[View online »](#)

## Product images:



Western blot of 10 ug of rat hippocampal (Hipp) lysate showing specific immunolabeling of the ~78k synapsin I doublet protein.