

## Product datasheet for **TA309237**

### Cacng2 Rabbit Polyclonal Antibody

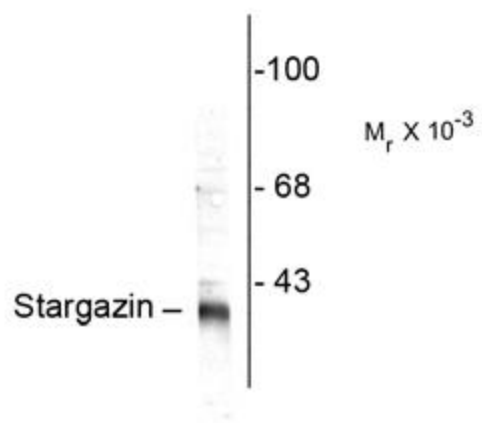
#### Product data:

Product Type:	Primary Antibodies
Applications:	WB
Recommended Dilution:	WB: 1:1000
Reactivity:	Rat
Host:	Rabbit
Isotype:	IgG
Clonality:	Polyclonal
Immunogen:	Synthetic peptide corresponding to amino acid residues from the C-terminal region conjugated to KLH
Formulation:	100 µl in 10 mM HEPES (pH 7.5), 150 mM NaCl, 100 µg per ml BSA and 50% glycerol.
Purification:	Affinity Purified
Conjugation:	Unconjugated
Storage:	Store at -20°C as received.
Stability:	Stable for 12 months from date of receipt.
Predicted Protein Size:	36 kDa
Gene Name:	calcium voltage-gated channel auxiliary subunit gamma 2
Database Link:	<a href="#">NP_445803</a> <a href="#">Entrez Gene 84347 Rat</a>
Synonyms:	MGC138502; MGC138504; stargazin



[View online »](#)

## Product images:



Western blot of rat synaptic membrane (SPM) showing specific immunolabeling of the ~ 36k stargazin protein.