

## Product datasheet for **TA309233**

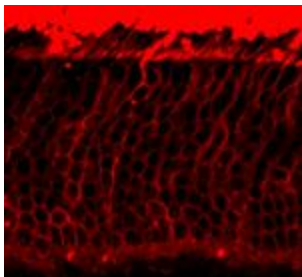
### Rhodopsin (RHO) Mouse Monoclonal Antibody [Clone ID: 1D4]

#### Product data:

|                         |  |
|-------------------------|--|
| Product Type:           | Primary Antibodies   |
| Clone Name:             | 1D4  |
| Applications:           | IHC  |
| Recommended Dilution:   | WB: 1:1000, IHC: 1:100   |
| Reactivity:             | Human, Mouse, Rat  |
| Host:                   | Mouse  |
| Isotype:                | IgG1   |
| Clonality:              | Monoclonal   |
| Immunogen:              | Purified native bovine rhodopsin   |
| Formulation:            | 100 µl in 10 mM HEPES (pH 7.5), 150 mM NaCl, 100 µg per ml BSA and 50% glycerol.   |
| Purification:           | Protein G purified   |
| Conjugation:            | Unconjugated   |
| Storage:                | Store at -20°C as received.  |
| Stability:              | Stable for 12 months from date of receipt.   |
| Predicted Protein Size: | 39 kDa   |
| Gene Name:              | rhodopsin  |
| Database Link:          | <a href="#">NP_000530</a><br><a href="#">Entrez Gene 24717 Rat</a> <a href="#">Entrez Gene 212541 Mouse</a> <a href="#">Entrez Gene 6010 Human</a><br><a href="#">P08100</a> |
| Synonyms:               | CSNBAD1; OPN2; RP4   |
| Protein Families:       | Druggable Genome, Transmembrane  |



[View online »](#)

**Product images:**

Immunohistochemical staining of mouse retinal section showing specific immunolabeling of the rhodopsin protein in the rod spherules. Photo courtesy of Mary Raven, University of California, Santa Barbara, CA.