

## Product datasheet for **TA309226**

### Rph3a Rabbit Polyclonal Antibody

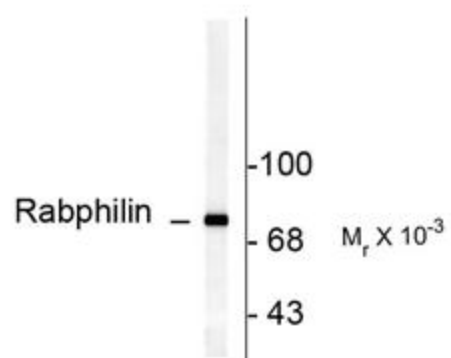
#### Product data:

|                         |   |
|-------------------------|---|
| Product Type:           | Primary Antibodies  |
| Applications:           | WB  |
| Recommended Dilution:   | WB: 1:1000, IHC: 1:400  |
| Reactivity:             | Rat   |
| Modifications:          | Phospho-specific  |
| Host:                   | Rabbit  |
| Isotype:                | IgG   |
| Clonality:              | Polyclonal  |
| Immunogen:              | Synthetic phospho-peptide corresponding to amino acid residues surrounding Ser234 conjugated to KLH |
| Formulation:            | 100 µl in 10 mM HEPES (pH 7.5), 150 mM NaCl, 100 µg per ml BSA and 50% glycerol.                    |
| Purification:           | Affinity Purified   |
| Conjugation:            | Unconjugated  |
| Storage:                | Store at -20°C as received.   |
| Stability:              | Stable for 12 months from date of receipt.  |
| Predicted Protein Size: | 82 kDa  |
| Gene Name:              | rabphilin 3A  |
| Database Link:          | <a href="#">NP_598202</a><br><a href="#">Entrez Gene 171039 Rat</a><br><a href="#">P47709</a>       |
| Synonyms:               | exophilin-1; KIAA0985; rabphilin  |



[View online »](#)

## Product images:



Western blot of rat brain lysate showing specific immunolabeling of the ~82k rabphilin 3A phosphorylated at Ser234.