

Product datasheet for **TA309225**

Rph3a Rabbit Polyclonal Antibody

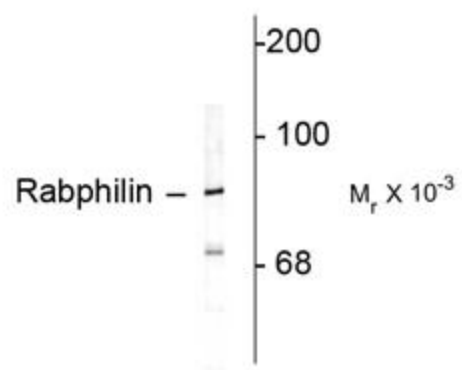
Product data:

Product Type:	Primary Antibodies
Applications:	WB
Recommended Dilution:	WB: 1:1000
Reactivity:	Rat
Host:	Rabbit
Isotype:	IgG
Clonality:	Polyclonal
Immunogen:	Synthetic peptide corresponding to amino acid residues from the C-terminal region conjugated to KLH
Formulation:	100 µl in 10 mM HEPES (pH 7.5), 150 mM NaCl, 100 µg per ml BSA and 50% glycerol.
Purification:	Affinity Purified
Conjugation:	Unconjugated
Storage:	Store at -20°C as received.
Stability:	Stable for 12 months from date of receipt.
Predicted Protein Size:	82 kDa
Gene Name:	rabphilin 3A
Database Link:	NP_598202 Entrez Gene 171039 Rat P47709
Synonyms:	exophilin-1; KIAA0985; rabphilin



[View online »](#)

Product images:



Western blot of rat cortex lysate showing specific immunolabeling of the ~82k rabphilin 3A.