

Product datasheet for **TA309223**

Dlg4 Rabbit Polyclonal Antibody

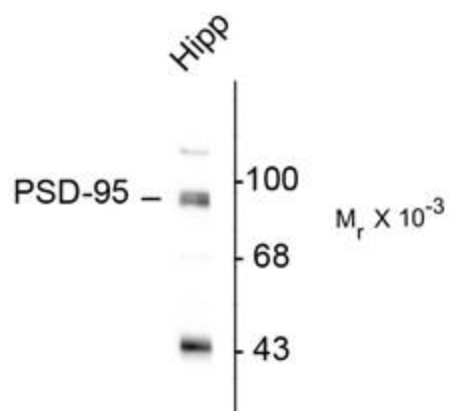
Product data:

Product Type:	Primary Antibodies
Applications:	WB
Recommended Dilution:	WB: 1:1000
Reactivity:	Rat
Host:	Rabbit
Isotype:	IgG
Clonality:	Polyclonal
Immunogen:	Synthetic peptide corresponding to amino acid residues from the N-terminal region conjugated to KLH
Formulation:	100 µl in 10 mM HEPES (pH 7.5), 150 mM NaCl, 100 µg per ml BSA and 50% glycerol.
Purification:	Affinity Purified
Conjugation:	Unconjugated
Storage:	Store at -20°C as received.
Stability:	Stable for 12 months from date of receipt.
Predicted Protein Size:	95 kDa
Gene Name:	discs large homolog 4
Database Link:	NP_062567 Entrez Gene 29495 Rat P31016
Synonyms:	FLJ97752; FLJ98574; PSD-95; PSD95; SAP-90; SAP90



[View online »](#)

Product images:



Western blot of rat hippocampal (Hipp) lysate showing specific immunolabeling of the ~95k PSD-95 protein.