

Product datasheet for **TA309219**

Slc12a5 Rabbit Polyclonal Antibody

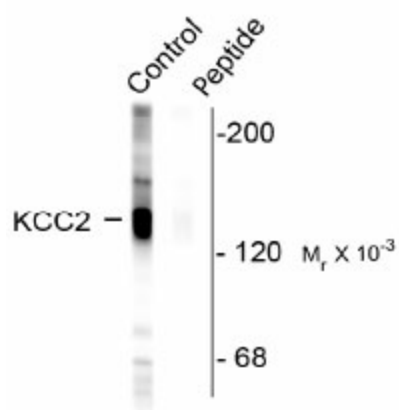
Product data:

Product Type:	Primary Antibodies
Applications:	WB
Recommended Dilution:	WB: 1:1000
Reactivity:	Rat
Modifications:	Phospho-specific
Host:	Rabbit
Isotype:	IgG
Clonality:	Polyclonal
Immunogen:	Synthetic phospho-peptide corresponding to amino acid residues surrounding Ser940 conjugated to KLH
Formulation:	100 µl in 10 mM HEPES (pH 7.5), 150 mM NaCl, 100 µg per ml BSA and 50% glycerol.
Purification:	Affinity Purified
Conjugation:	Unconjugated
Storage:	Store at -20°C as received.
Stability:	Stable for 12 months from date of receipt.
Predicted Protein Size:	135 kDa
Gene Name:	solute carrier family 12 member 5
Database Link:	NP_599190 Entrez Gene 171373 Rat Q63633
Synonyms:	hKCC2; KCC2; KIAA1176



[View online »](#)

Product images:



Western blot of rat hippocampal homogenate showing specific labeling of the ~ 135k KCC2 protein (Control). Immunolabeling is blocked by preadsorption with the phospho-peptide used as antigen (Peptide) but not by the corresponding dephospho-peptide (not shown).



Figure from citation: Western blot analysis for phosphorylation status of KCC2 (also known as SLC12A5) in the prefrontal cortex and the hippocampus of social and isolation reared (IR) mice by using anti-SLC12A5 Phospho antibody. Dilution: 1:1000-10,000 [View Citation](#)