

Product datasheet for **TA309217**

Kcnb2 Rabbit Polyclonal Antibody

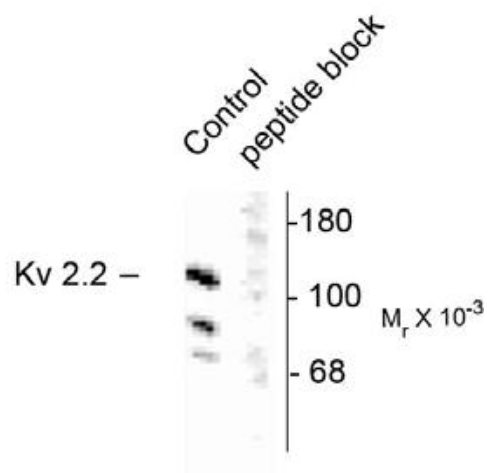
Product data:

Product Type:	Primary Antibodies
Applications:	WB
Recommended Dilution:	WB: 1:1000, IHC: 1:1000
Reactivity:	Rat
Host:	Rabbit
Isotype:	IgG
Clonality:	Polyclonal
Immunogen:	Synthetic peptide corresponding to amino acid residues specific to the Kv2.2 subunit conjugated to KLH
Formulation:	100 µl in 10 mM HEPES (pH 7.5), 150 mM NaCl, 100 µg per ml BSA and 50% glycerol.
Purification:	Affinity Purified
Conjugation:	Unconjugated
Storage:	Store at -20°C as received.
Stability:	Stable for 12 months from date of receipt.
Predicted Protein Size:	100 kDa
Gene Name:	potassium voltage-gated channel subfamily B member 2
Database Link:	NP_446452 Entrez Gene 117105 Rat
Synonyms:	KV2.2



[View online »](#)

Product images:



Western blot of rat brain homogenate showing specific immunolabeling of the ~125k voltage-gated potassium channel, Kv2.2 (Control). The immunolabeling is blocked by preadsorption with the peptide used as antigen (Peptide Block).