

Product datasheet for **TA309215**

PLK1 Rabbit Polyclonal Antibody

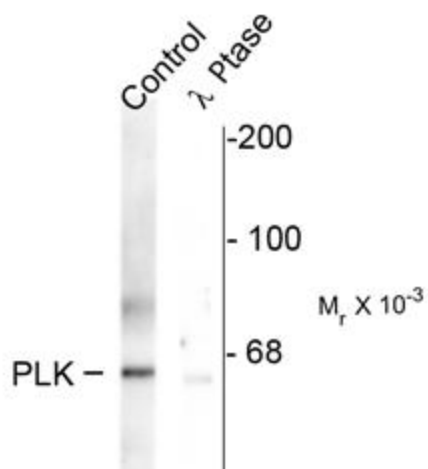
Product data:

Product Type:	Primary Antibodies
Applications:	WB
Recommended Dilution:	WB: 1:1000
Reactivity:	Rat, Human
Modifications:	Phospho-specific
Host:	Rabbit
Isotype:	IgG
Clonality:	Polyclonal
Immunogen:	Synthetic phospho-peptide corresponding to amino acid residues surrounding Thr210 conjugated to KLH
Formulation:	100 µl in 10 mM HEPES (pH 7.5), 150 mM NaCl, 100 µg per ml BSA and 50% glycerol.
Purification:	Affinity Purified
Conjugation:	Unconjugated
Storage:	Store at -20°C as received.
Stability:	Stable for 12 months from date of receipt.
Predicted Protein Size:	66 kDa
Gene Name:	polo like kinase 1
Database Link:	NP_005021 Entrez Gene 25515 Rat Entrez Gene 5347 Human P53350
Synonyms:	PLK; STPK13
Protein Families:	Druggable Genome, Protein Kinase
Protein Pathways:	Cell cycle, Oocyte meiosis, Progesterone-mediated oocyte maturation



[View online »](#)

Product images:



Western blot of rat synaptic membrane showing specific immunolabeling of the ~66 k PLK protein phosphorylated at Thr210 (control). The phosphospecificity of this labeling is shown in the second lane (lambda-phosphatase: λ -Ptase). The blot is identical to the control except that it was incubated in λ -Ptase (1200 units for 30 min) before being exposed to the phospho-Thr210 PLK antibody. The immunolabeling is completely eliminated by treatment with λ -Ptase.