

## Product datasheet for **TA309214**

### Prph Chicken Polyclonal Antibody

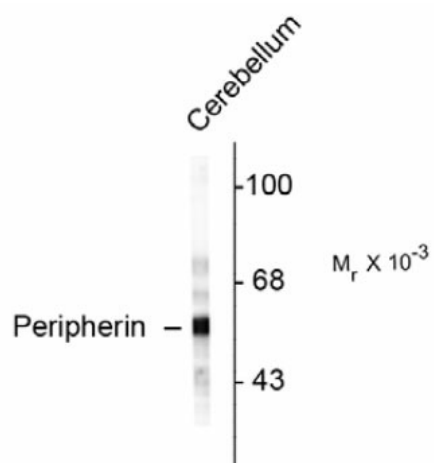
#### Product data:

Product Type:	Primary Antibodies
Applications:	WB
Recommended Dilution:	WB:1:1,000, IF: 1:500
Reactivity:	Rat
Host:	Chicken
Isotype:	IgY
Clonality:	Polyclonal
Immunogen:	Recombinant rat peripherin expressed in and purified from E. coli
Formulation:	total IgY fraction in PBS + 10 mM NaN <sub>3</sub> .
Purification:	Total IgY fraction
Conjugation:	Unconjugated
Storage:	Store at -20°C as received.
Stability:	Stable for 12 months from date of receipt.
Predicted Protein Size:	57 kDa
Gene Name:	peripherin
Database Link:	<a href="#">NP_036765</a> <a href="#">Entrez Gene 24688 Rat</a>
Synonyms:	NEF4; peripherin; PRPH1



[View online »](#)

## Product images:



Western blot of rat cerebellar lysate showing specific immunolabeling of the ~57k peripherin protein.