

Product datasheet for **TA309210**

Parkin (PARK2) Rabbit Polyclonal Antibody

Product data:

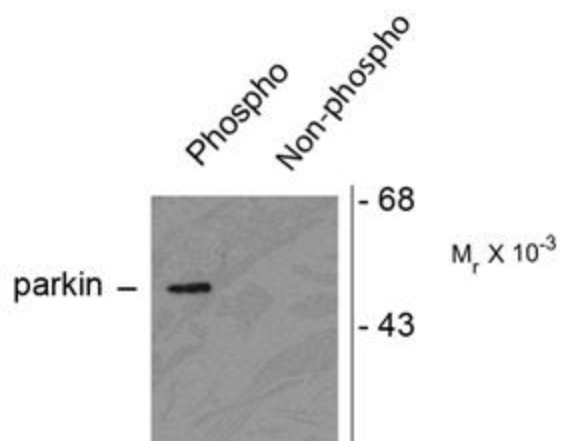
| | |
|-------------------------|--|
| Product Type: | Primary Antibodies |
| Applications: | WB |
| Recommended Dilution: | WB: 1:1000 |
| Reactivity: | Human |
| Modifications: | Phospho-specific |
| Host: | Rabbit |
| Isotype: | IgG |
| Clonality: | Polyclonal |
| Immunogen: | Synthetic phospho-peptide corresponding to amino acid residues surrounding Ser378 conjugated to KLH |
| Formulation: | 100 µl in 10 mM HEPES (pH 7.5), 150 mM NaCl, 100 µg per ml BSA and 50% glycerol. |
| Purification: | Affinity Purified |
| Conjugation: | Unconjugated |
| Storage: | Store at -20°C as received. |
| Stability: | Stable for 12 months from date of receipt. |
| Predicted Protein Size: | 52 kDa |
| Gene Name: | parkin RBR E3 ubiquitin protein ligase |
| Database Link: | NP_004553 Entrez Gene 5071 Human O60260 |
| Background: | The precise function of this gene is unknown; however, the encoded protein is a component of a multiprotein E3 ubiquitin ligase complex that mediates the targeting of substrate proteins for proteasomal degradation. Mutations in this gene are known to cause Parkinson disease and autosomal recessive juvenile Parkinson disease. Alternative splicing of this gene produces multiple transcript variants encoding distinct isoforms. Additional splice variants of this gene have been described but currently lack transcript support. [provided by RefSeq] |
| Synonyms: | AR-JP; LPRS2; PDJ; PRKN |



[View online »](#)

Protein Pathways: Parkinson's disease, Ubiquitin mediated proteolysis

Product images:



Western blot of HEK293 cells transfected with Parkin WT (Phospho) and Parkin S378 mutant (non-phospho) showing the phospho-specific immunolabeling of the ~ 52 k parkin protein. The immunolabeling is absent in the parkin S378 mutant.