

## Product datasheet for **TA309208**

### **Pak1 Rabbit Polyclonal Antibody**

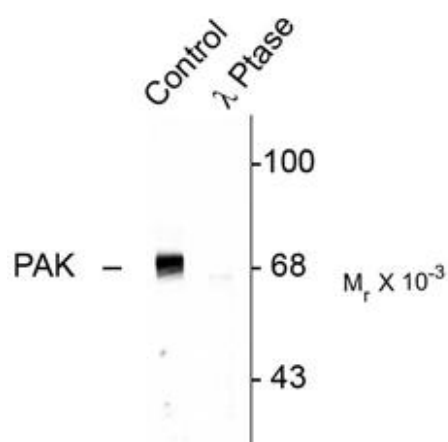
#### **Product data:**

Product Type:	Primary Antibodies
Applications:	WB
Recommended Dilution:	WB: 1:1000
Reactivity:	Rat
Modifications:	Phospho-specific
Host:	Rabbit
Isotype:	IgG
Clonality:	Polyclonal
Immunogen:	Synthetic phospho-peptide corresponding to amino acid residues surrounding Thr402 conjugated to KLH
Formulation:	100 µl in 10 mM HEPES (pH 7.5), 150 mM NaCl, 100 µg per ml BSA and 50% glycerol.
Purification:	Affinity Purified
Conjugation:	Unconjugated
Storage:	Store at -20°C as received.
Stability:	Stable for 12 months from date of receipt.
Predicted Protein Size:	68/70 kDa
Gene Name:	p21 protein (Cdc42/Rac)-activated kinase 1
Database Link:	<a href="#">NP_035165</a> <a href="#">Entrez Gene 29431 Rat</a>
Synonyms:	Alpha-PAK; MGC130000; MGC130001; p65-PAK; PAK-1; PAKalpha



[View online »](#)

## Product images:



Western blot of rat hippocampal lysate showing specific immunolabeling of the ~68k to ~70k PAK protein (Control). The phosphospecificity of this labeling is shown in the second lane (lambda-phosphatase: λ-Ptase). The blot is identical to the control except that it was incubated in λ-Ptase (1200 units for 30 min) before being exposed to the phospho-Thr402 PAK-1, 2, 3 antibody. The immunolabeling of PAK is completely eliminated by treatment with λ-Ptase.