

## Product datasheet for **TA309202**

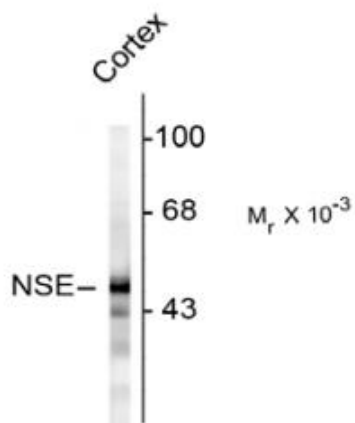
### NSE (ENO2) Rabbit Polyclonal Antibody

#### Product data:

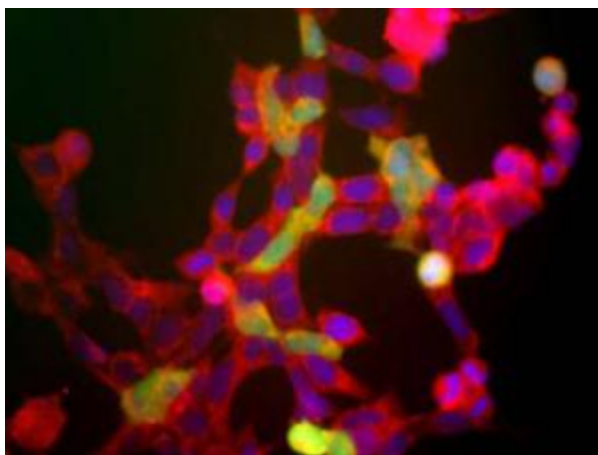
Product Type:	Primary Antibodies
Applications:	IF, WB
Recommended Dilution:	WB: 1:2,000, IF: 1:500
Reactivity:	Human, Rat
Host:	Rabbit
Isotype:	IgG
Clonality:	Polyclonal
Immunogen:	Recombinant human NSE expressed in and purified from E. coli
Formulation:	neat serum
Purification:	Neat Serum
Conjugation:	Unconjugated
Storage:	Store at -20°C as received.
Stability:	Stable for 12 months from date of receipt.
Predicted Protein Size:	47 kDa
Gene Name:	enolase 2
Database Link:	<a href="#">NP_001966</a> <a href="#">Entrez Gene 24334 Rat</a> <a href="#">Entrez Gene 2026 Human</a> <a href="#">P09104</a>
Background:	This gene encodes one of the three enolase isoenzymes found in mammals. This isoenzyme, a homodimer, is found in mature neurons and cells of neuronal origin. A switch from alpha enolase to gamma enolase occurs in neural tissue during development in rats and primates. [provided by RefSeq]
Synonyms:	HEL-S-279; NSE
Protein Pathways:	Glycolysis / Gluconeogenesis, Metabolic pathways, RNA degradation



[View online »](#)

**Product images:**

Western blot of rat cortex homogenate showing specific immunolabeling of the ~47k NSE protein.



HEK 293 cells showing staining with anti-NSE antibody (red). The green channels shows staining for UCHL1 (cat. #2060-UCHL1).