

Product datasheet for **TA309200**

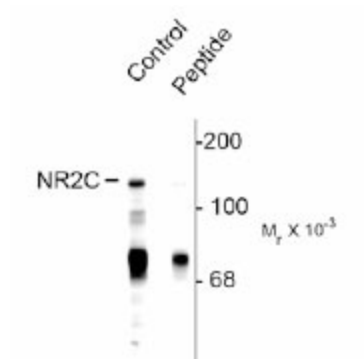
Grin2c Rabbit Polyclonal Antibody

Product data:

Product Type:	Primary Antibodies
Applications:	WB
Recommended Dilution:	WB: 1:1000
Reactivity:	Mouse, Rat
Modifications:	Phospho-specific
Host:	Rabbit
Isotype:	IgG
Clonality:	Polyclonal
Immunogen:	Synthetic phospho-peptide corresponding to amino acid residues surrounding Ser1244 conjugated to KLH
Formulation:	100 µl in 10 mM HEPES (pH 7.5), 150 mM NaCl, 100 µg per ml BSA and 50% glycerol.
Purification:	Affinity Purified
Conjugation:	Unconjugated
Storage:	Store at -20°C as received.
Stability:	Stable for 12 months from date of receipt.
Predicted Protein Size:	140 kDa
Gene Name:	glutamate receptor, ionotropic, NMDA2C (epsilon 3)
Database Link:	NP_034480 Entrez Gene 24411 Rat Entrez Gene 14813 Mouse Q01098
Synonyms:	NMDAR2C; NR2C



[View online »](#)

Product images:

Western blot of rat cerebellum lysate showing specific immunolabeling of the ~140k NR2C subunit of the NMDA receptor phosphorylated at Ser1244. The phosphospecificity is shown in the second lane where immunoreactivity is blocked by preadsorption with the phospho-peptide (Peptide) used as antigen but not by the dephosphopeptide (not shown).