

Product datasheet for **TA309199**

Grin2c Rabbit Polyclonal Antibody

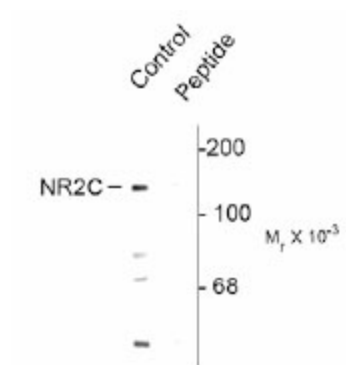
Product data:

| | |
|-------------------------|--------------------------------------------------------------------------------------------------------------------------------------|
| Product Type: | Primary Antibodies |
| Applications: | WB |
| Recommended Dilution: | WB: 1:1000 |
| Reactivity: | Mouse, Rat |
| Modifications: | Phospho-specific |
| Host: | Rabbit |
| Isotype: | IgG |
| Clonality: | Polyclonal |
| Immunogen: | Synthetic phospho-peptide corresponding to amino acid residues surrounding Ser1096 conjugated to KLH |
| Formulation: | 100 µl in 10 mM HEPES (pH 7.5), 150 mM NaCl, 100 µg per ml BSA and 50% glycerol. |
| Purification: | Affinity Purified |
| Conjugation: | Unconjugated |
| Storage: | Store at -20°C as received. |
| Stability: | Stable for 12 months from date of receipt. |
| Predicted Protein Size: | 140 kDa |
| Gene Name: | glutamate receptor, ionotropic, NMDA2C (epsilon 3) |
| Database Link: | NP_034480 Entrez Gene 24411 Rat Entrez Gene 14813 Mouse Q01098 |
| Synonyms: | NMDAR2C; NR2C |



[View online »](#)

Product images:



Western blot of mouse brain lysate showing specific immunolabeling of the ~140k NR2C subunit of the NMDA receptor phosphorylated at Ser1096. The phosphospecificity is shown in the second lane where immunoreactivity is blocked by preadsorption with the phospho-peptide (Peptide) used as antigen but not by the dephosphopeptide (not shown).