

Product datasheet for **TA309198**

NMDAR2C (GRIN2C) Rabbit Polyclonal Antibody

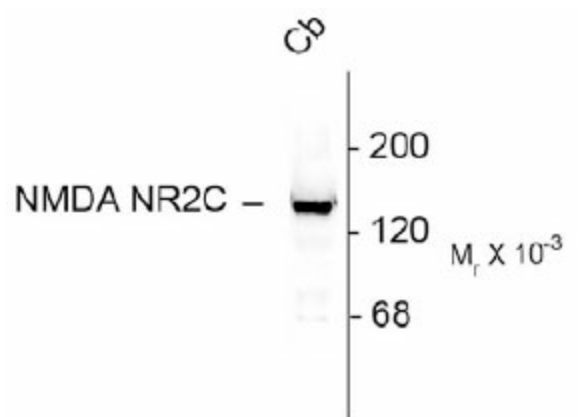
Product data:

Product Type:	Primary Antibodies
Applications:	WB
Recommended Dilution:	WB: 1:1000, IHC: 1:1000-2000, IP: 3ug/200ug lysate
Reactivity:	Rat, Mouse, Human
Host:	Rabbit
Isotype:	IgG
Clonality:	Polyclonal
Immunogen:	Fusion protein from the N-terminal region of the NR2C subunit
Formulation:	Lyophilized
Purification:	Affinity Purified
Conjugation:	Unconjugated
Storage:	Store at -20°C as received.
Stability:	Stable for 12 months from date of receipt.
Predicted Protein Size:	140 kDa
Gene Name:	glutamate ionotropic receptor NMDA type subunit 2C
Database Link:	NP_000826 Entrez Gene 14813 Mouse Entrez Gene 24411 Rat Entrez Gene 2905 Human Q14957
Synonyms:	GluN2C; NMDAR2C; NR2C
Protein Families:	Druggable Genome, Ion Channels: Glutamate Receptors, Transmembrane
Protein Pathways:	Alzheimer's disease, Amyotrophic lateral sclerosis (ALS), Calcium signaling pathway, Long-term potentiation, Neuroactive ligand-receptor interaction



[View online »](#)

Product images:



Western blot of 10 ug of rat cerebellar lysate showing specific immunolabeling of the ~140k NR2C subunit of the NMDA receptor.