

Product datasheet for **TA309195**

Grin2b Rabbit Polyclonal Antibody

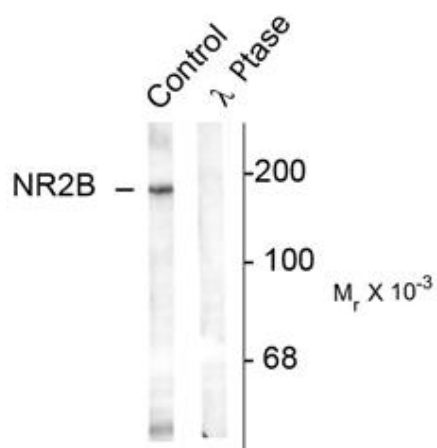
Product data:

Product Type:	Primary Antibodies
Applications:	WB
Recommended Dilution:	WB: 1:1000, IHC: 1:400
Reactivity:	Rat
Modifications:	Phospho-specific
Host:	Rabbit
Isotype:	IgG
Clonality:	Polyclonal
Immunogen:	Synthetic phospho-peptide corresponding to amino acid residues surrounding Tyr1336 conjugated to KLH
Formulation:	100 µl in 10 mM HEPES (pH 7.5), 150 mM NaCl, 100 µg per ml BSA and 50% glycerol.
Purification:	Affinity Purified
Conjugation:	Unconjugated
Storage:	Store at -20°C as received.
Stability:	Stable for 12 months from date of receipt.
Predicted Protein Size:	180 kDa
Gene Name:	glutamate ionotropic receptor NMDA type subunit 2B
Database Link:	NP_036706 Entrez Gene 24410 Rat Q00960
Synonyms:	hNR3; MGC142178; MGC142180; NMDAR2B; NR2B; NR3



[View online »](#)

Product images:



Western blot of rat hippocampal lysate showing specific immunolabeling of the ~180k NR2B subunit of the NMDAR phosphorylated at Tyr1336 (Control). The phosphospecificity of this labeling is shown in the second lane (lambda-phosphatase: λ-Ptase). The blot is identical to the control except that it was incubated in λ-Ptase (1200 units for 30 min) before being exposed to the phospho-Tyr1336 NMDA NR2B antibody. The immunolabeling is completely eliminated by treatment with λ-Ptase.